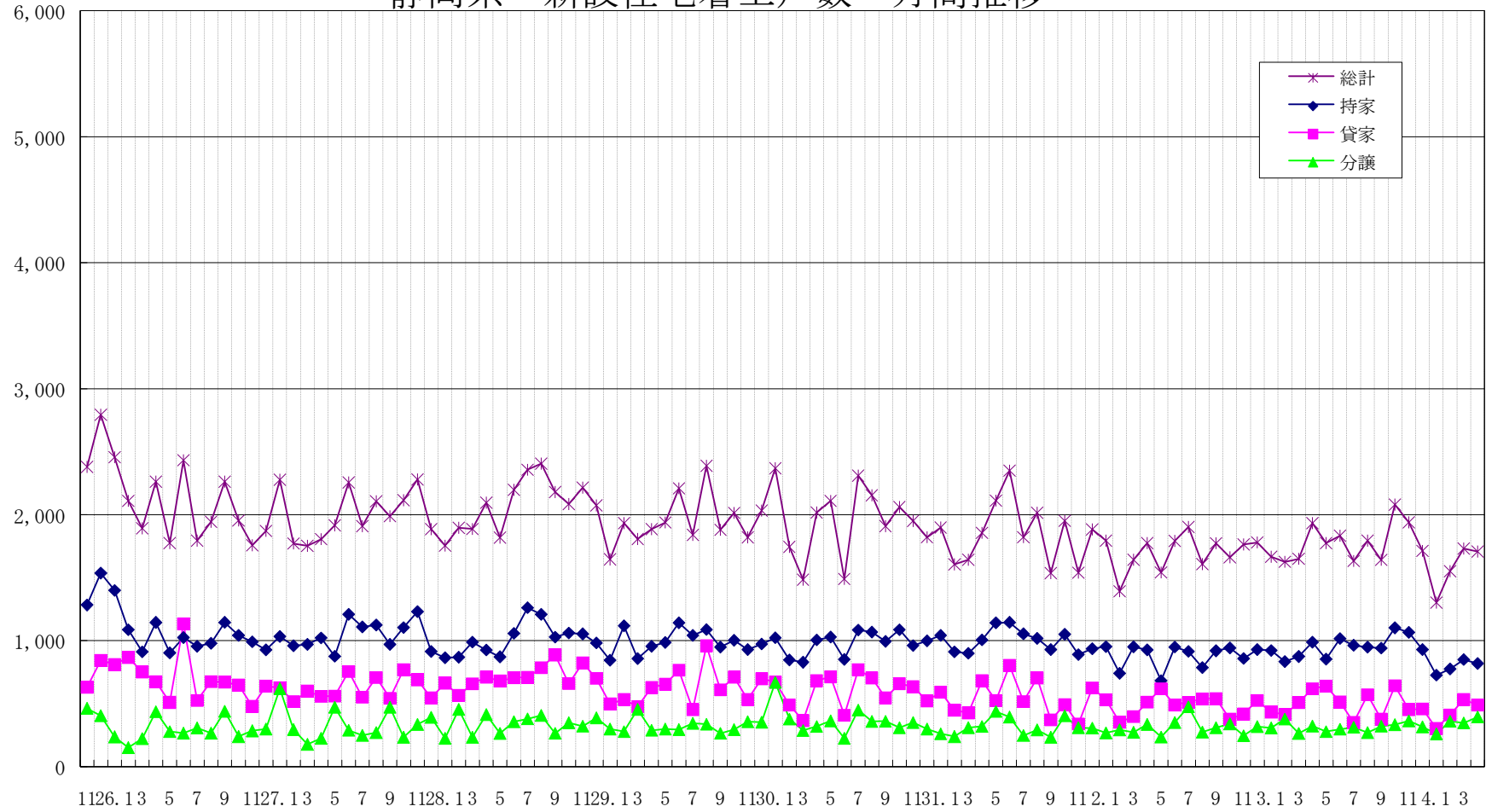


戸

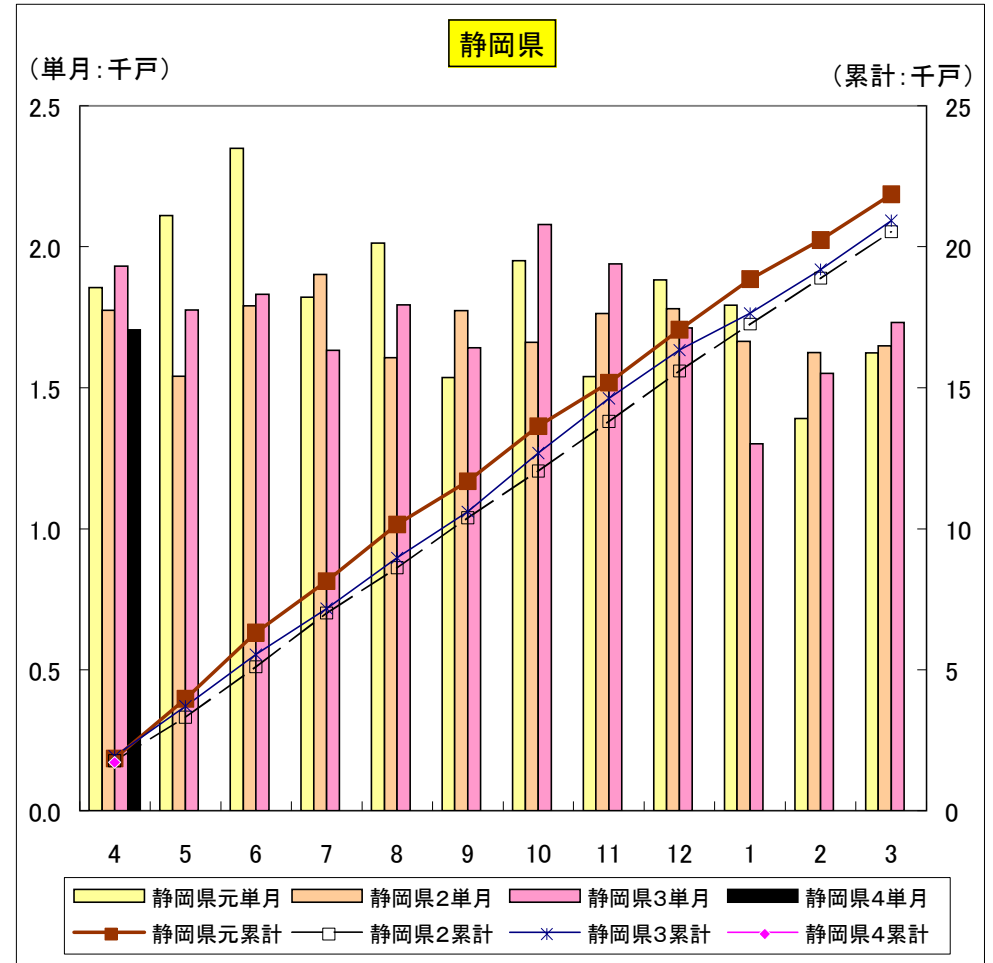
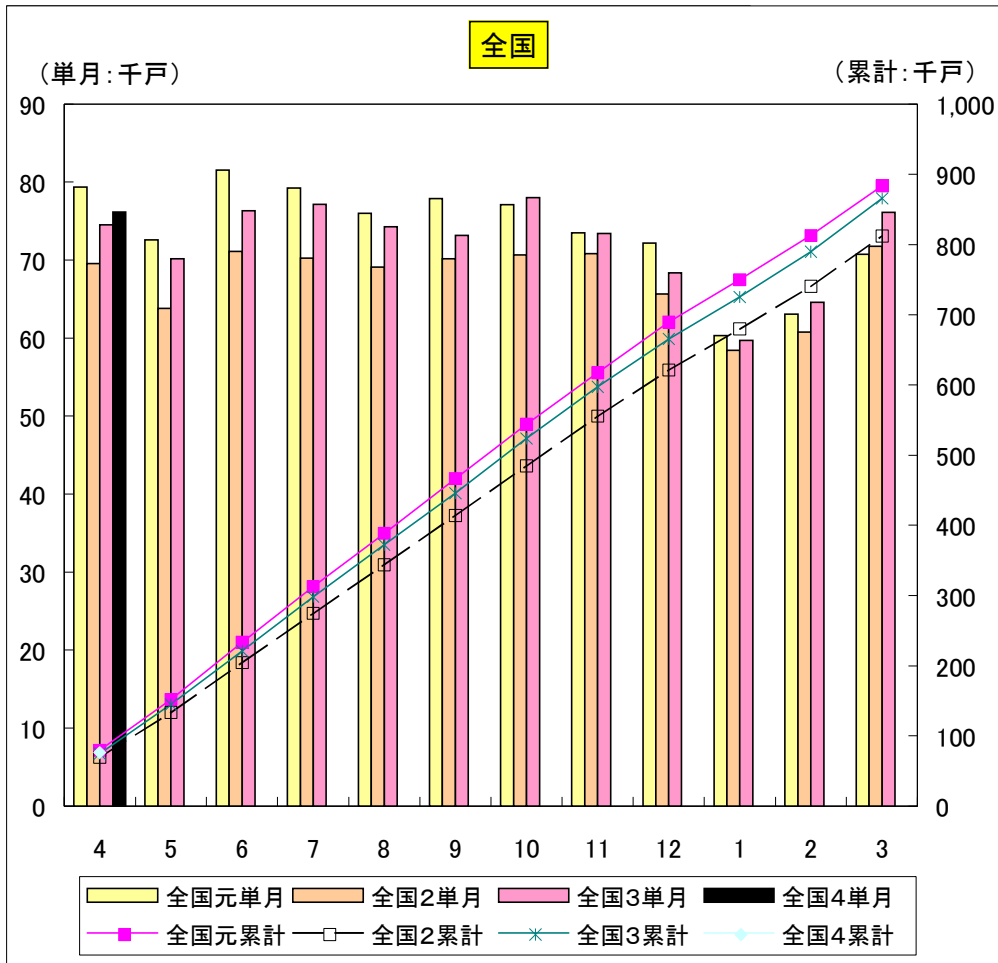
静岡県 新設住宅着工戸数 月間推移



年月

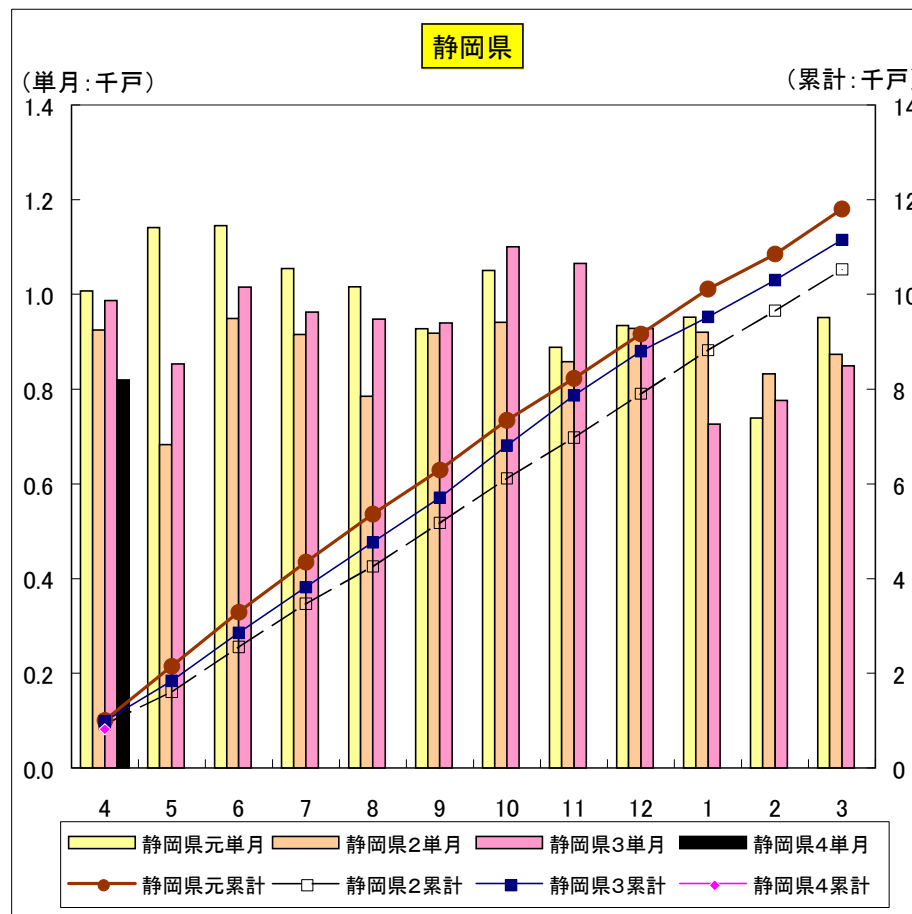
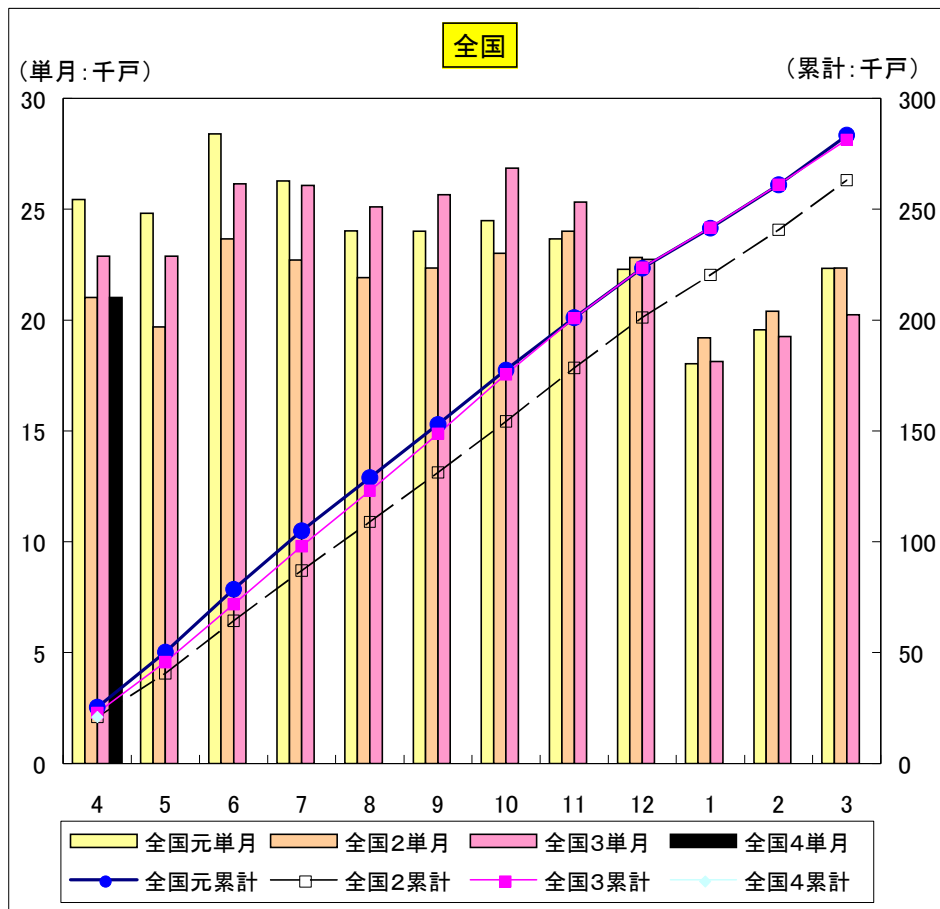
| 総計 | 全国元単月 | 全国2単月 | 全国3単月 | 全国4単月 | 全国元累計 | 全国2累計 | 全国3累計 | 全国4累計 | 静岡県元単月 | 静岡県2単月 | 静岡県3単月 | 静岡県4単月 | 静岡県元累計 | 静岡県2累計 | 静岡県3累計 | 静岡県4累計 |
|----|--------|--------|--------|--------|---------|---------|---------|--------|--------|--------|--------|--------|--------|--------|--------|--------|
| 4 | 79,389 | 69,568 | 74,521 | 76,179 | 79,389 | 69,568 | 74,521 | 76,179 | 1,855 | 1,774 | 1,931 | 1,706 | 1,855 | 1,774 | 1,931 | 1,706 |
| 5 | 72,581 | 63,839 | 70,178 | | 151,970 | 133,407 | 144,699 | | 2,110 | 1,541 | 1,775 | | 3,965 | 3,315 | 3,706 | |
| 6 | 81,541 | 71,101 | 76,312 | | 233,511 | 204,508 | 221,011 | | 2,349 | 1,790 | 1,831 | | 6,314 | 5,105 | 5,537 | |
| 7 | 79,232 | 70,244 | 77,182 | | 312,743 | 274,752 | 298,193 | | 1,821 | 1,902 | 1,632 | | 8,135 | 7,007 | 7,169 | |
| 8 | 76,034 | 69,101 | 74,303 | | 388,777 | 343,853 | 372,496 | | 2,013 | 1,606 | 1,793 | | 10,148 | 8,613 | 8,962 | |
| 9 | 77,915 | 70,186 | 73,178 | | 466,692 | 414,039 | 445,674 | | 1,536 | 1,773 | 1,641 | | 11,684 | 10,386 | 10,603 | |
| 10 | 77,123 | 70,685 | 78,004 | | 543,815 | 484,724 | 523,678 | | 1,951 | 1,661 | 2,079 | | 13,635 | 12,047 | 12,682 | |
| 11 | 73,523 | 70,798 | 73,414 | | 617,338 | 555,522 | 597,092 | | 1,539 | 1,763 | 1,939 | | 15,174 | 13,810 | 14,621 | |
| 12 | 72,174 | 65,643 | 68,393 | | 689,512 | 621,165 | 665,485 | | 1,882 | 1,780 | 1,712 | | 17,056 | 15,590 | 16,333 | |
| 1 | 60,341 | 58,448 | 59,690 | | 749,853 | 679,613 | 725,175 | | 1,792 | 1,665 | 1,301 | | 18,848 | 17,255 | 17,634 | |
| 2 | 63,105 | 60,764 | 64,614 | | 812,958 | 740,377 | 789,789 | | 1,391 | 1,625 | 1,551 | | 20,239 | 18,880 | 19,185 | |
| 3 | 70,729 | 71,787 | 76,120 | | 883,687 | 812,164 | 865,909 | | 1,624 | 1,648 | 1,731 | | 21,863 | 20,528 | 20,916 | |

全体



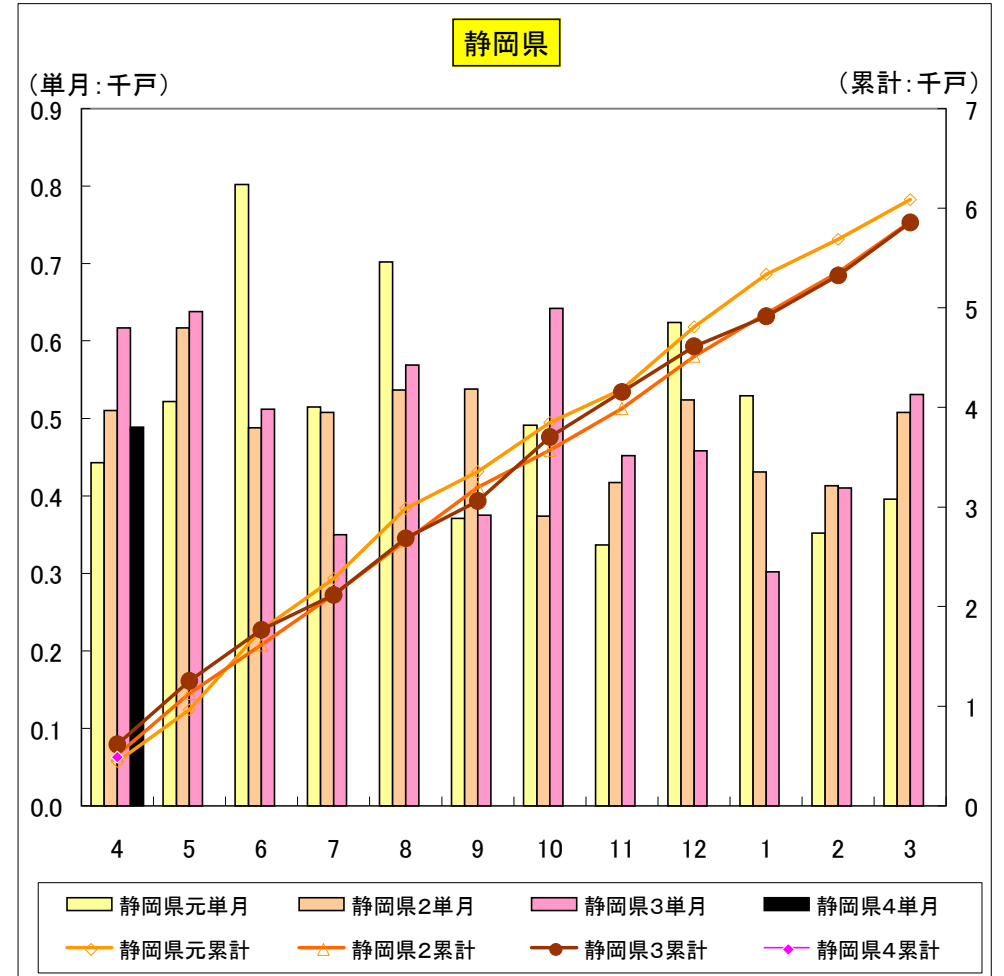
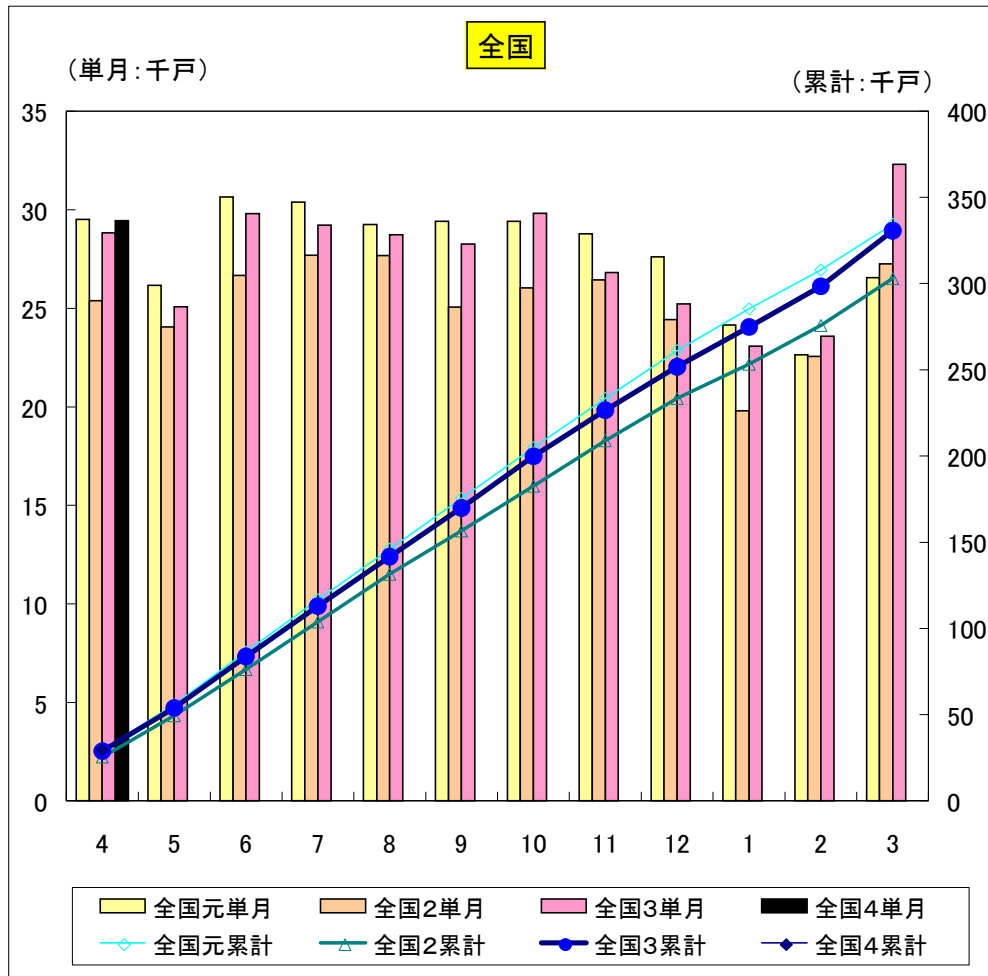
| 持家 | 全国元単月 | 全国2単月 | 全国3単月 | 全国4単月 | 全国元累計 | 全国2累計 | 全国3累計 | 全国4累計 | 静岡県元単月 | 静岡県2単月 | 静岡県3単月 | 静岡県4単月 | 静岡県元累計 | 静岡県2累計 | 静岡県3累計 | 静岡県4累計 |
|----|--------|--------|--------|--------|---------|---------|---------|--------|--------|--------|--------|--------|--------|--------|--------|--------|
| 4 | 25,436 | 21,018 | 22,877 | 21,014 | 25,436 | 21,018 | 22,877 | 21,014 | 1,007 | 925 | 987 | 819 | 1,007 | 925 | 987 | 819 |
| 5 | 24,826 | 19,697 | 22,887 | | 50,262 | 40,715 | 45,764 | | 1,141 | 683 | 853 | | 2,148 | 1,608 | 1,840 | |
| 6 | 28,394 | 23,650 | 26,151 | | 78,656 | 64,365 | 71,915 | | 1,145 | 949 | 1,015 | | 3,293 | 2,557 | 2,855 | |
| 7 | 26,282 | 22,708 | 26,071 | | 104,938 | 87,073 | 97,986 | | 1,054 | 915 | 963 | | 4,347 | 3,472 | 3,818 | |
| 8 | 24,027 | 21,915 | 25,100 | | 128,965 | 108,988 | 123,086 | | 1,016 | 785 | 948 | | 5,363 | 4,257 | 4,766 | |
| 9 | 24,008 | 22,337 | 25,659 | | 152,973 | 131,325 | 148,745 | | 927 | 918 | 940 | | 6,290 | 5,175 | 5,706 | |
| 10 | 24,495 | 23,013 | 26,840 | | 177,468 | 154,338 | 175,585 | | 1,050 | 941 | 1,101 | | 7,340 | 6,116 | 6,807 | |
| 11 | 23,655 | 24,010 | 25,329 | | 201,123 | 178,348 | 200,914 | | 888 | 858 | 1,065 | | 8,228 | 6,974 | 7,872 | |
| 12 | 22,294 | 22,819 | 22,731 | | 223,417 | 201,167 | 223,645 | | 934 | 928 | 928 | | 9,162 | 7,902 | 8,800 | |
| 1 | 18,037 | 19,200 | 18,130 | | 241,454 | 220,367 | 241,775 | | 952 | 920 | 726 | | 10,114 | 8,822 | 9,526 | |
| 2 | 19,557 | 20,390 | 19,258 | | 261,011 | 240,757 | 261,033 | | 739 | 832 | 776 | | 10,853 | 9,654 | 10,302 | |
| 3 | 22,327 | 22,340 | 20,246 | | 283,338 | 263,097 | 281,279 | | 951 | 873 | 849 | | 11,804 | 10,527 | 11,151 | |

持家



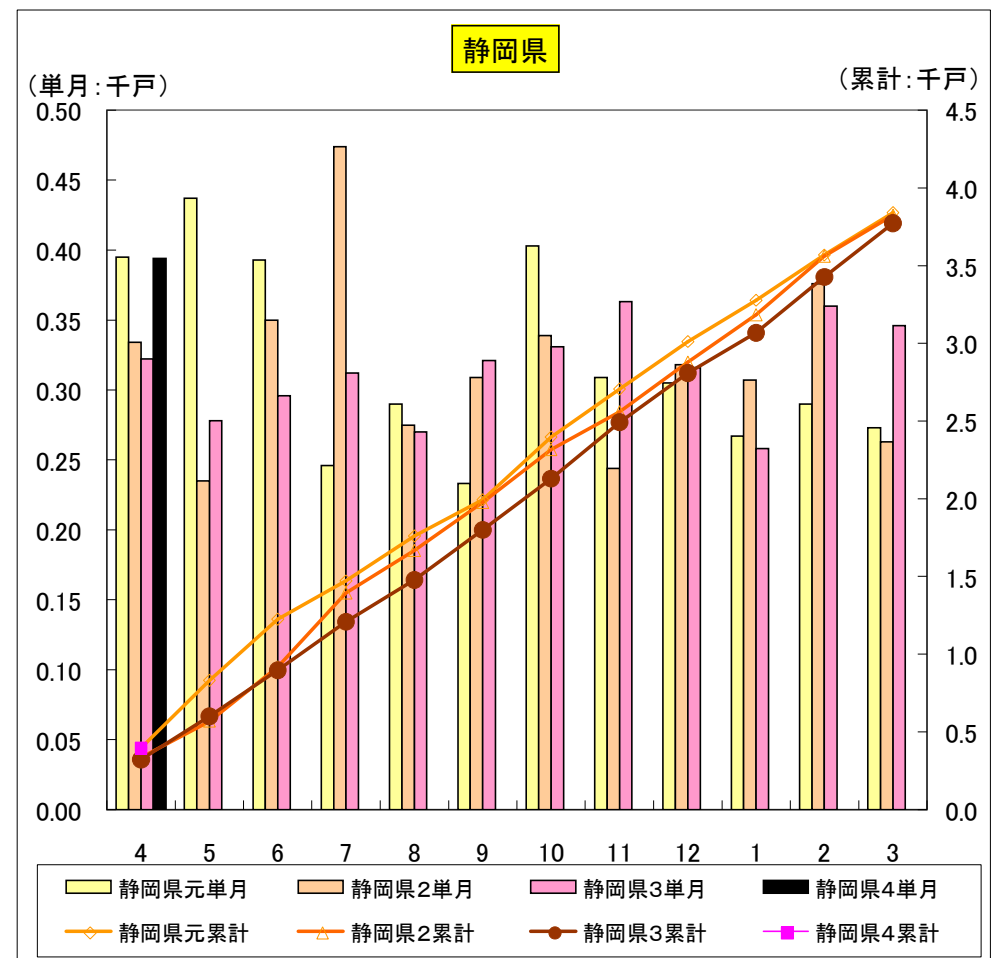
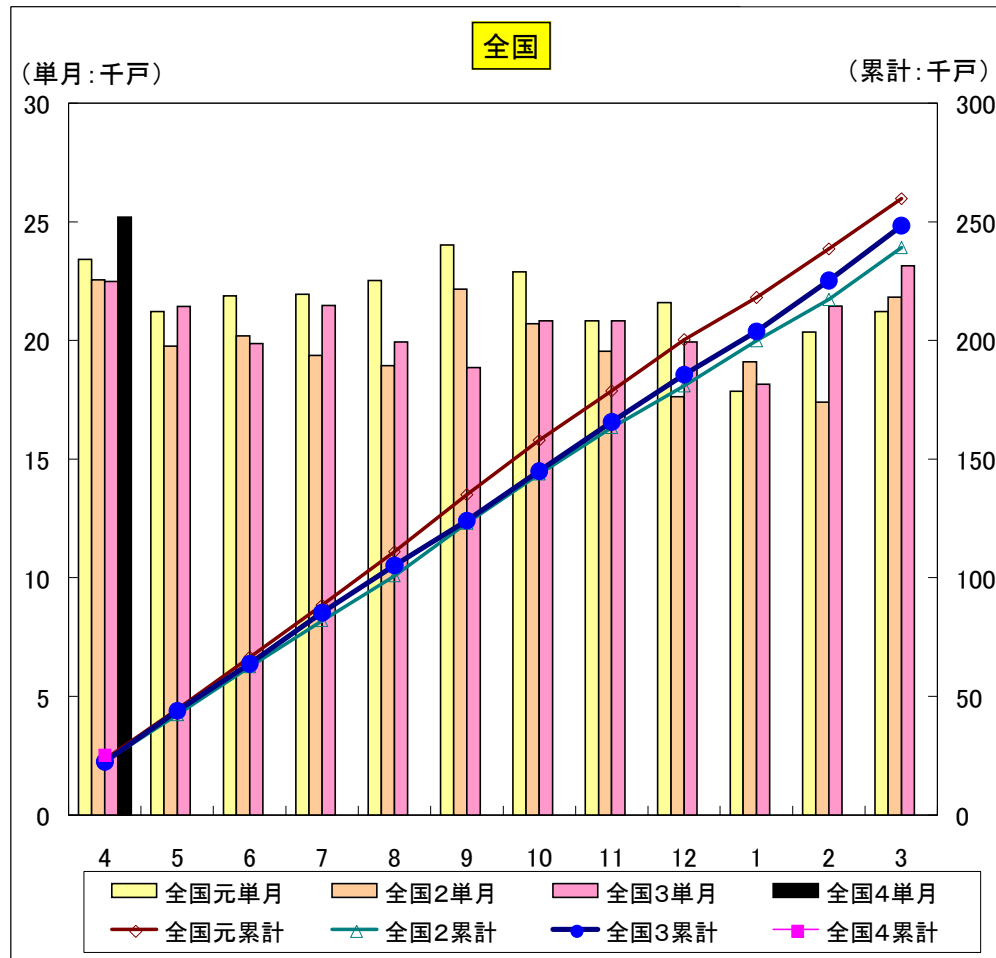
| 貸家 | 全国元単月 | 全国2単月 | 全国3単月 | 全国4単月 | 全国元累計 | 全国2累計 | 全国3累計 | 全国4累計 | 静岡県元単月 | 静岡県2単月 | 静岡県3単月 | 静岡県4単月 | 静岡県元累計 | 静岡県2累計 | 静岡県3累計 | 静岡県4累計 |
|----|--------|--------|--------|--------|---------|---------|---------|--------|--------|--------|--------|--------|--------|--------|--------|--------|
| 4 | 29,511 | 25,379 | 28,825 | 29,444 | 29,511 | 25,379 | 28,825 | 29,444 | 443 | 510 | 617 | 489 | 443 | 510 | 617 | 489 |
| 5 | 26,164 | 24,041 | 25,074 | | 55,675 | 49,420 | 53,899 | | 522 | 617 | 638 | | 965 | 1,127 | 1,255 | |
| 6 | 30,645 | 26,666 | 29,802 | | 86,320 | 76,086 | 83,701 | | 802 | 488 | 512 | | 1,767 | 1,615 | 1,767 | |
| 7 | 30,383 | 27,696 | 29,230 | | 116,703 | 103,782 | 112,931 | | 515 | 508 | 350 | | 2,282 | 2,123 | 2,117 | |
| 8 | 29,255 | 27,671 | 28,733 | | 145,958 | 131,453 | 141,664 | | 702 | 537 | 569 | | 2,984 | 2,660 | 2,686 | |
| 9 | 29,414 | 25,053 | 28,254 | | 175,372 | 156,506 | 169,918 | | 371 | 538 | 375 | | 3,355 | 3,198 | 3,061 | |
| 10 | 29,417 | 26,043 | 29,822 | | 204,789 | 182,549 | 199,740 | | 491 | 374 | 642 | | 3,846 | 3,572 | 3,703 | |
| 11 | 28,779 | 26,451 | 26,819 | | 233,568 | 209,000 | 226,559 | | 337 | 417 | 452 | | 4,183 | 3,989 | 4,155 | |
| 12 | 27,611 | 24,423 | 25,222 | | 261,179 | 233,423 | 251,781 | | 624 | 524 | 458 | | 4,807 | 4,513 | 4,613 | |
| 1 | 24,147 | 19,794 | 23,083 | | 285,326 | 253,217 | 274,864 | | 529 | 431 | 302 | | 5,336 | 4,944 | 4,915 | |
| 2 | 22,638 | 22,556 | 23,583 | | 307,964 | 275,773 | 298,447 | | 352 | 413 | 410 | | 5,688 | 5,357 | 5,325 | |
| 3 | 26,545 | 27,245 | 32,305 | | 334,509 | 303,018 | 330,752 | | 396 | 508 | 531 | | 6,084 | 5,865 | 5,856 | |

貸家



| 分譲 | 全国元単月 | 全国2単月 | 全国3単月 | 全国4単月 | 全国元累計 | 全国2累計 | 全国3累計 | 全国4累計 | 静岡県元単月 | 静岡県2単月 | 静岡県3単月 | 静岡県4単月 | 静岡県元累計 | 静岡県2累計 | 静岡県3累計 | 静岡県4累計 |
|----|--------|--------|--------|--------|---------|---------|---------|--------|--------|--------|--------|--------|--------|--------|--------|--------|
| 4 | 23,411 | 22,557 | 22,483 | 25,199 | 23,411 | 22,557 | 22,483 | 25,199 | 395 | 334 | 322 | 394 | 395 | 334 | 322 | 394 |
| 5 | 21,217 | 19,757 | 21,426 | | 44,628 | 42,314 | 43,909 | | 437 | 235 | 278 | | 832 | 569 | 600 | |
| 6 | 21,870 | 20,189 | 19,877 | | 66,498 | 62,503 | 63,786 | | 393 | 350 | 296 | | 1,225 | 919 | 896 | |
| 7 | 21,942 | 19,359 | 21,480 | | 88,440 | 81,862 | 85,266 | | 246 | 474 | 312 | | 1,471 | 1,393 | 1,208 | |
| 8 | 22,517 | 18,933 | 19,936 | | 110,957 | 100,795 | 105,202 | | 290 | 275 | 270 | | 1,761 | 1,668 | 1,478 | |
| 9 | 24,029 | 22,159 | 18,855 | | 134,986 | 122,954 | 124,057 | | 233 | 309 | 321 | | 1,994 | 1,977 | 1,799 | |
| 10 | 22,896 | 20,706 | 20,836 | | 157,882 | 143,660 | 144,893 | | 403 | 339 | 331 | | 2,397 | 2,316 | 2,130 | |
| 11 | 20,819 | 19,548 | 20,813 | | 178,701 | 163,208 | 165,706 | | 309 | 244 | 363 | | 2,706 | 2,560 | 2,493 | |
| 12 | 21,593 | 17,622 | 19,927 | | 200,294 | 180,830 | 185,633 | | 305 | 318 | 316 | | 3,011 | 2,878 | 2,809 | |
| 1 | 17,856 | 19,089 | 18,154 | | 218,150 | 199,919 | 203,787 | | 267 | 307 | 258 | | 3,278 | 3,185 | 3,067 | |
| 2 | 20,362 | 17,398 | 21,453 | | 238,512 | 217,317 | 225,240 | | 290 | 376 | 360 | | 3,568 | 3,561 | 3,427 | |
| 3 | 21,220 | 21,824 | 23,144 | | 259,732 | 239,141 | 248,384 | | 273 | 263 | 346 | | 3,841 | 3,824 | 3,773 | |

分譲



| 分譲マンション | 全国元単月 | 全国2単月 | 全国3単月 | 全国4単月 | 全国元累計 | 全国2累計 | 全国3累計 | 全国4累計 | 静岡県元単月 | 静岡県2単月 | 静岡県3単月 | 静岡県4単月 | 静岡県元累計 | 静岡県2累計 | 静岡県3累計 | 静岡県4累計 |
|---------|--------|--------|--------|--------|---------|---------|---------|--------|--------|--------|--------|--------|--------|--------|--------|--------|
| 4 | 10,480 | 10,723 | 10,776 | 12,685 | 10,480 | 10,723 | 10,776 | 12,685 | 67 | 82 | 0 | 69 | 67 | 82 | 0 | 69 |
| 5 | 9,165 | 9,292 | 9,444 | | 19,645 | 20,015 | 20,220 | | 145 | 0 | 0 | | 212 | 82 | 0 | |
| 6 | 8,597 | 8,422 | 7,024 | | 28,242 | 28,437 | 27,244 | | 101 | 87 | 0 | | 313 | 169 | 0 | |
| 7 | 8,600 | 8,352 | 9,117 | | 36,842 | 36,789 | 36,361 | | 0 | 253 | 43 | | 313 | 422 | 43 | |
| 8 | 10,159 | 9,377 | 7,968 | | 47,001 | 46,166 | 44,329 | | 30 | 121 | 0 | | 343 | 543 | 43 | |
| 9 | 12,022 | 11,970 | 7,251 | | 59,023 | 58,136 | 51,580 | | 0 | 119 | 71 | | 343 | 662 | 114 | |
| 10 | 9,998 | 9,908 | 8,436 | | 69,021 | 68,044 | 60,016 | | 72 | 88 | 18 | | 415 | 750 | 132 | |
| 11 | 7,995 | 8,049 | 8,239 | | 77,016 | 76,093 | 68,255 | | 0 | 0 | 27 | | 415 | 750 | 159 | |
| 12 | 8,957 | 6,149 | 7,091 | | 85,973 | 82,242 | 75,346 | | 27 | 0 | 0 | | 442 | 750 | 159 | |
| 1 | 6,789 | 8,775 | 7,071 | | 92,762 | 91,017 | 82,417 | | 0 | 83 | 0 | | 442 | 833 | 159 | |
| 2 | 9,353 | 6,779 | 9,727 | | 102,115 | 97,796 | 92,144 | | 51 | 135 | 90 | | 493 | 968 | 249 | |
| 3 | 9,500 | 10,392 | 10,618 | | 111,615 | 108,188 | 102,762 | | 0 | 0 | 54 | | 493 | 968 | 303 | |

分譲マンション

