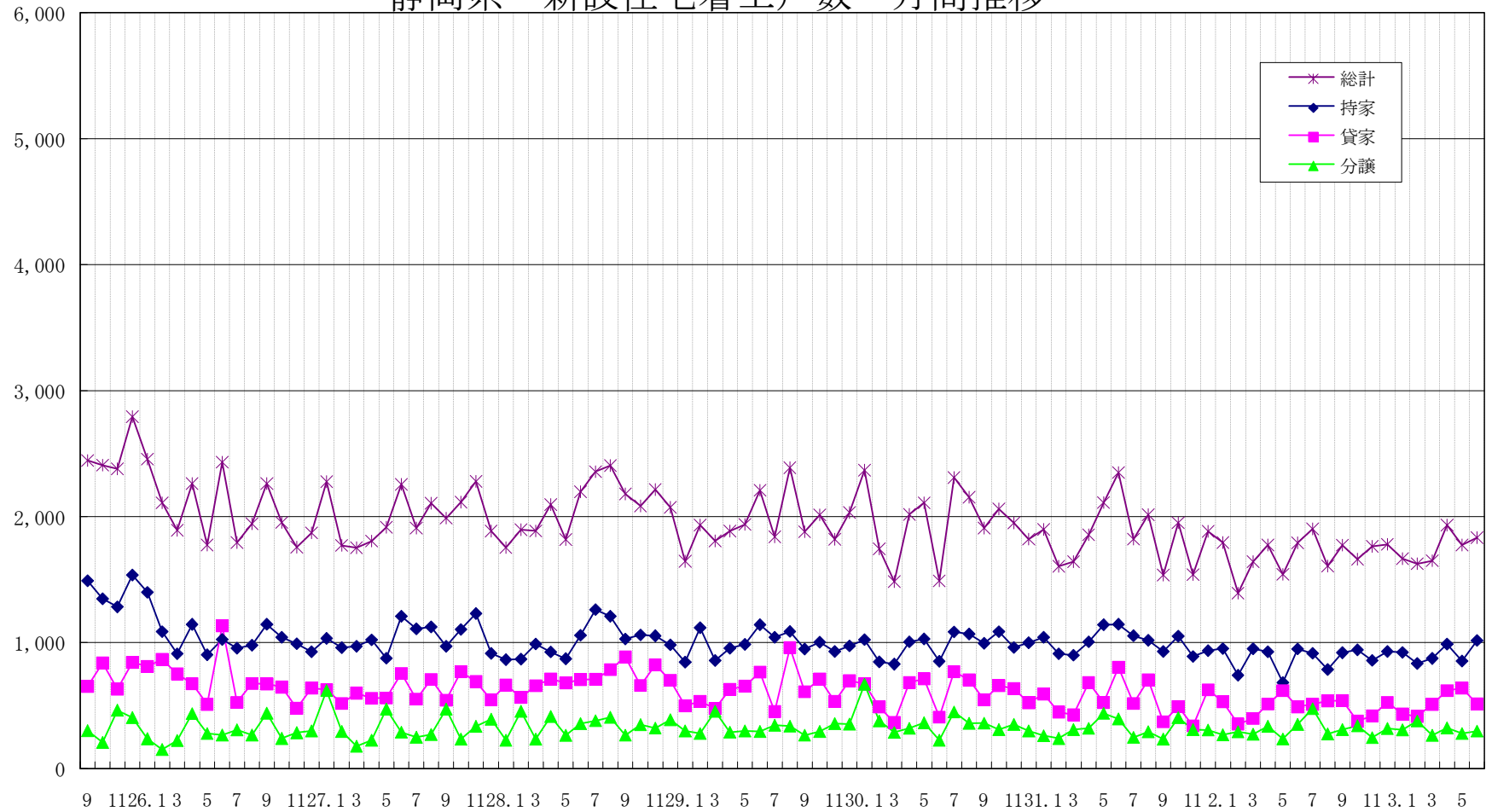


戸

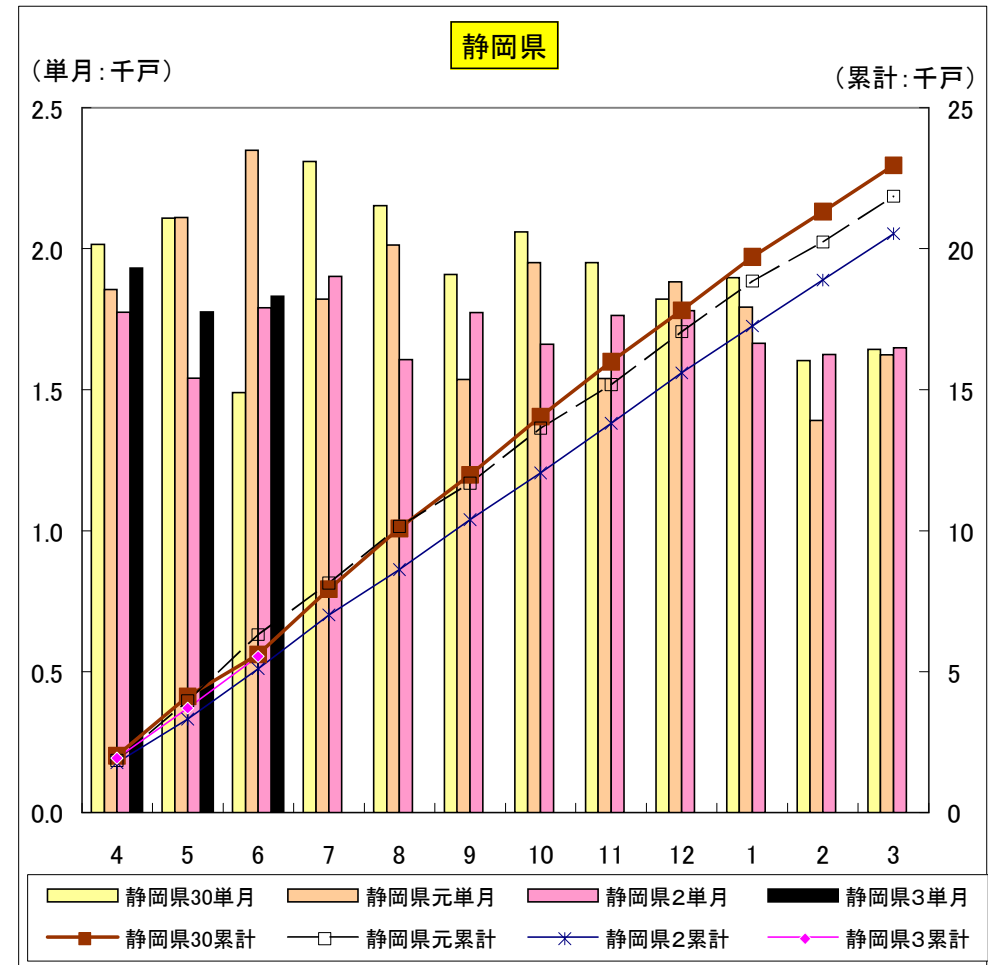
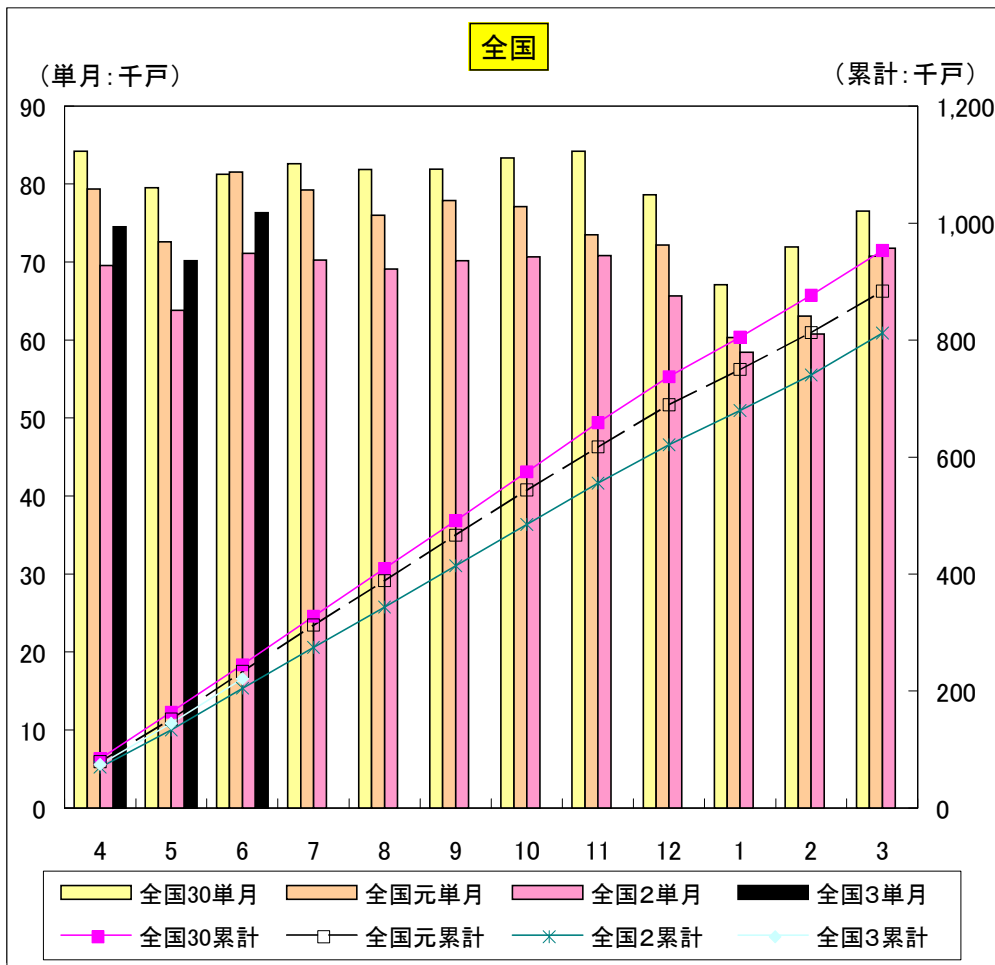
# 静岡県 新設住宅着工戸数 月間推移



年月

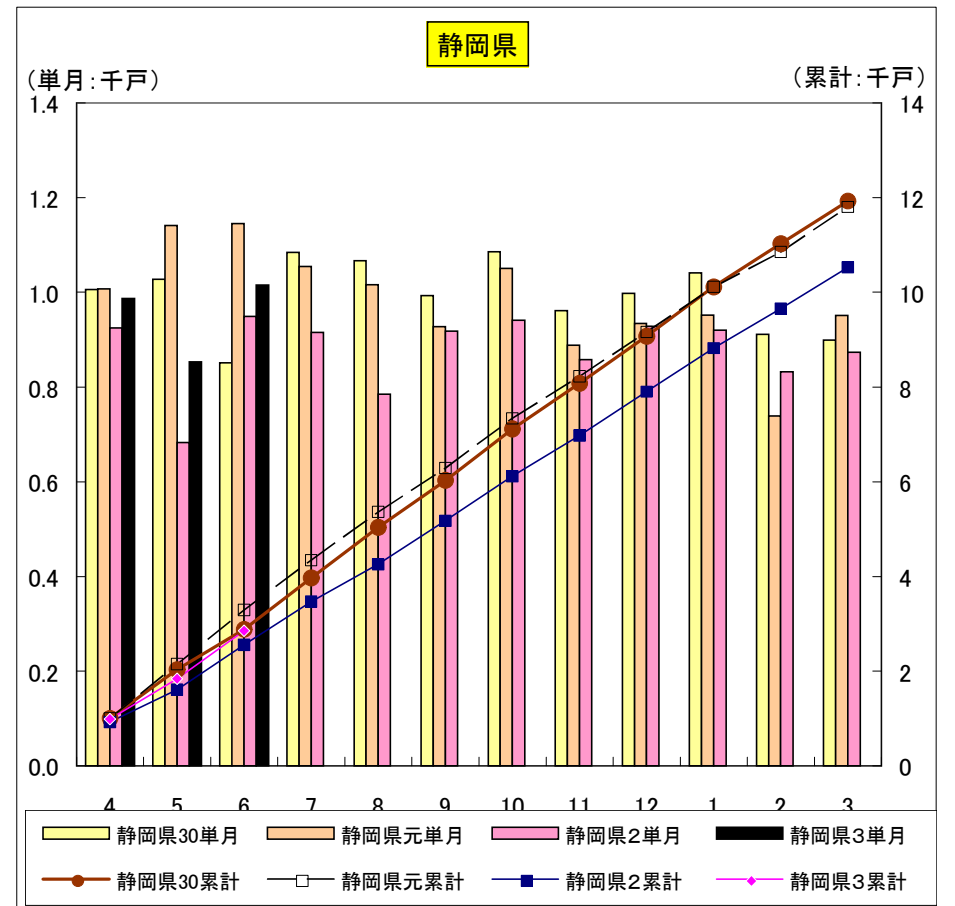
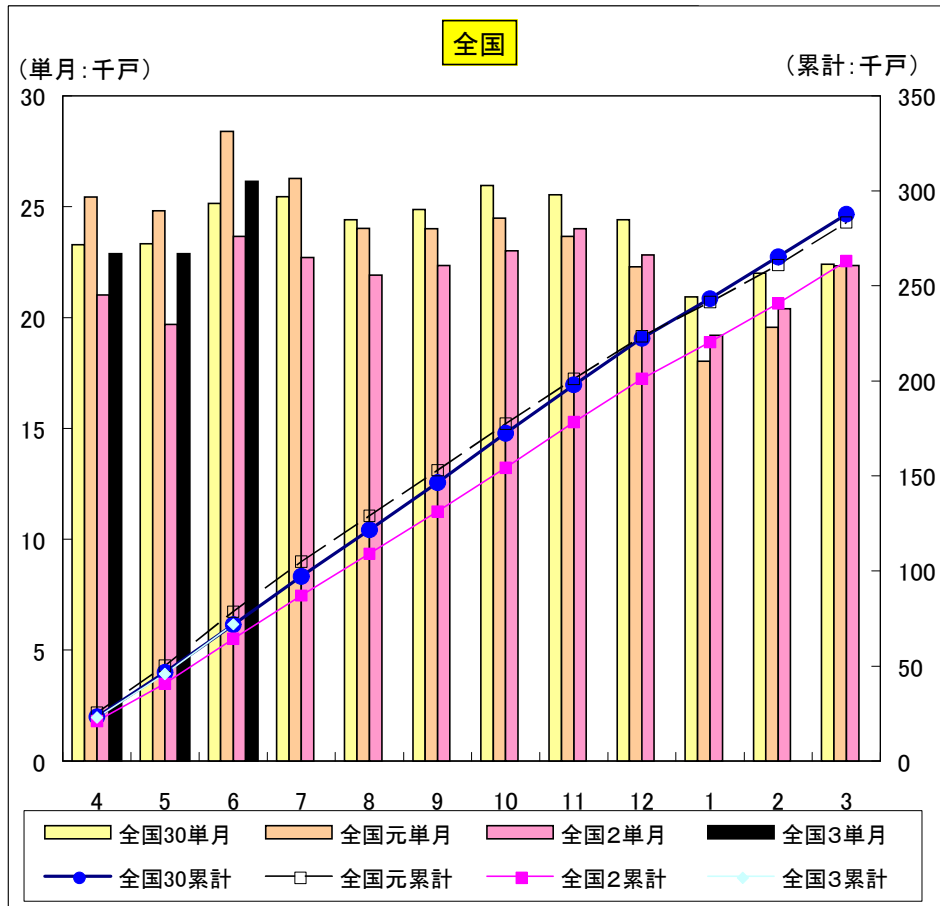
| 総計 | 全国30単月 | 全国元単月  | 全国2単月  | 全国3単月  | 全国30累計  | 全国元累計   | 全国2累計   | 全国3累計   | 静岡県30単月 | 静岡県元単月 | 静岡県2単月 | 静岡県3単月 | 静岡県30累計 | 静岡県元累計 | 静岡県2累計 | 静岡県3累計 |
|----|--------|--------|--------|--------|---------|---------|---------|---------|---------|--------|--------|--------|---------|--------|--------|--------|
| 4  | 84,226 | 79,389 | 69,568 | 74,521 | 84,226  | 79,389  | 69,568  | 74,521  | 2,015   | 1,855  | 1,774  | 1,931  | 2,015   | 1,855  | 1,774  | 1,931  |
| 5  | 79,539 | 72,581 | 63,839 | 70,178 | 163,765 | 151,970 | 133,407 | 144,699 | 2,108   | 2,110  | 1,541  | 1,775  | 4,123   | 3,965  | 3,315  | 3,706  |
| 6  | 81,275 | 81,541 | 71,101 | 76,312 | 245,040 | 233,511 | 204,508 | 221,011 | 1,489   | 2,349  | 1,790  | 1,831  | 5,612   | 6,314  | 5,105  | 5,537  |
| 7  | 82,615 | 79,232 | 70,244 |        | 327,655 | 312,743 | 274,752 |         | 2,309   | 1,821  | 1,902  |        | 7,921   | 8,135  | 7,007  |        |
| 8  | 81,860 | 76,034 | 69,101 |        | 409,515 | 388,777 | 343,853 |         | 2,152   | 2,013  | 1,606  |        | 10,073  | 10,148 | 8,613  |        |
| 9  | 81,903 | 77,915 | 70,186 |        | 491,418 | 466,692 | 414,039 |         | 1,908   | 1,536  | 1,773  |        | 11,981  | 11,684 | 10,386 |        |
| 10 | 83,330 | 77,123 | 70,685 |        | 574,748 | 543,815 | 484,724 |         | 2,059   | 1,951  | 1,661  |        | 14,040  | 13,635 | 12,047 |        |
| 11 | 84,213 | 73,523 | 70,798 |        | 658,961 | 617,338 | 555,522 |         | 1,950   | 1,539  | 1,763  |        | 15,990  | 15,174 | 13,810 |        |
| 12 | 78,634 | 72,174 | 65,643 |        | 737,595 | 689,512 | 621,165 |         | 1,821   | 1,882  | 1,780  |        | 17,811  | 17,056 | 15,590 |        |
| 1  | 67,087 | 60,341 | 58,448 |        | 804,682 | 749,853 | 679,613 |         | 1,897   | 1,792  | 1,665  |        | 19,708  | 18,848 | 17,255 |        |
| 2  | 71,966 | 63,105 | 60,764 |        | 876,648 | 812,958 | 740,377 |         | 1,603   | 1,391  | 1,625  |        | 21,311  | 20,239 | 18,880 |        |
| 3  | 76,558 | 70,729 | 71,787 |        | 953,206 | 883,687 | 812,164 |         | 1,642   | 1,624  | 1,648  |        | 22,953  | 21,863 | 20,528 |        |

全体



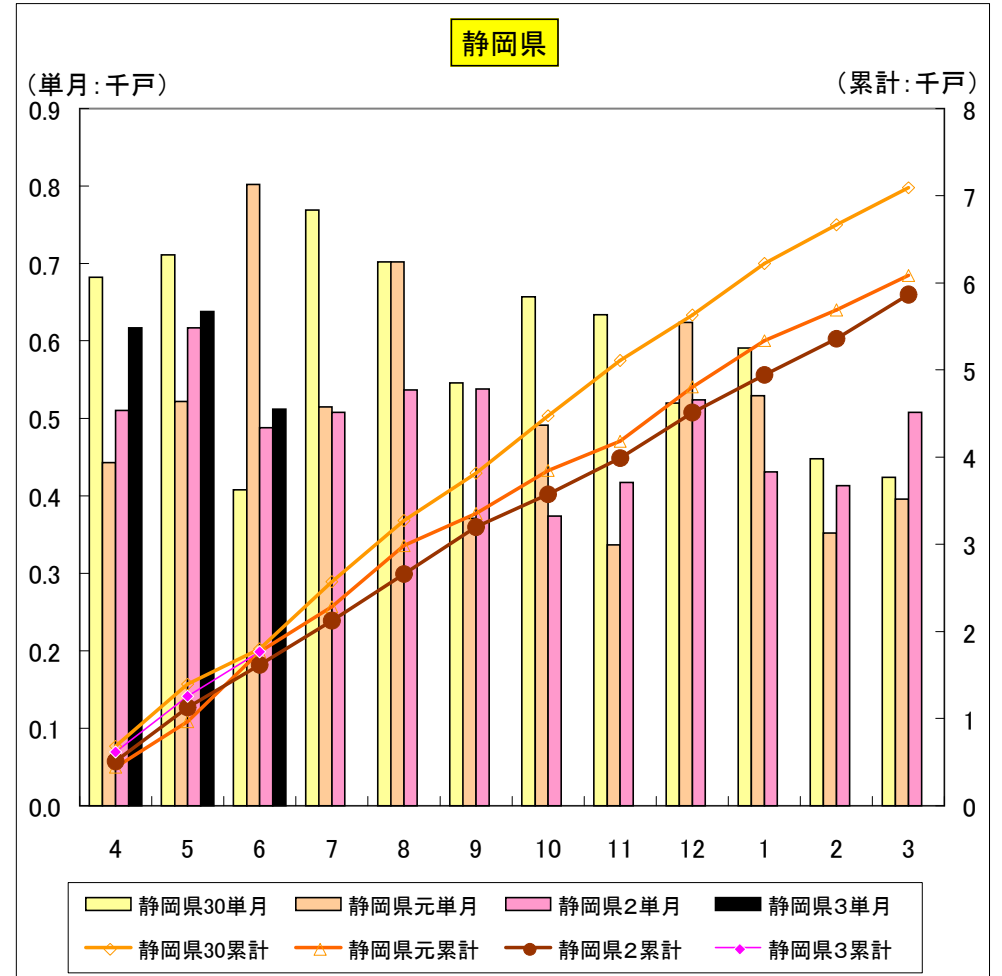
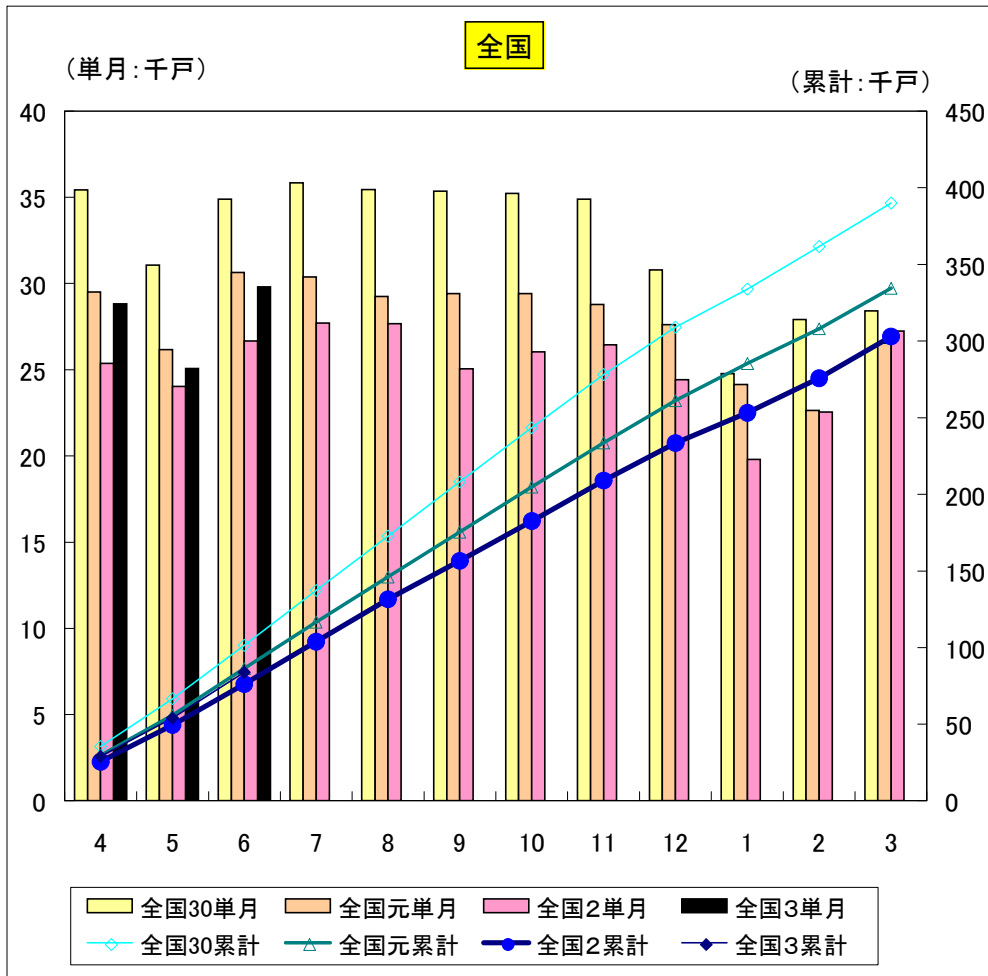
| 持家 | 全国30単月 | 全国元単月  | 全国2単月  | 全国3単月  | 全国30累計  | 全国元累計   | 全国2累計   | 全国3累計  | 静岡県30単月 | 静岡県元単月 | 静岡県2単月 | 静岡県3単月 | 静岡県30累計 | 静岡県元累計 | 静岡県2累計 | 静岡県3累計 |
|----|--------|--------|--------|--------|---------|---------|---------|--------|---------|--------|--------|--------|---------|--------|--------|--------|
| 4  | 23,289 | 25,436 | 21,018 | 22,877 | 23,289  | 25,436  | 21,018  | 22,877 | 1,006   | 1,007  | 925    | 987    | 1,006   | 1,007  | 925    | 987    |
| 5  | 23,321 | 24,826 | 19,697 | 22,887 | 46,610  | 50,262  | 40,715  | 45,764 | 1,028   | 1,141  | 683    | 853    | 2,034   | 2,148  | 1,608  | 1,840  |
| 6  | 25,148 | 28,394 | 23,650 | 26,151 | 71,758  | 78,656  | 64,365  | 71,915 | 851     | 1,145  | 949    | 1,015  | 2,885   | 3,293  | 2,557  | 2,855  |
| 7  | 25,447 | 26,282 | 22,708 |        | 97,205  | 104,938 | 87,073  |        | 1,084   | 1,054  | 915    |        | 3,969   | 4,347  | 3,472  |        |
| 8  | 24,420 | 24,027 | 21,915 |        | 121,625 | 128,965 | 108,988 |        | 1,067   | 1,016  | 785    |        | 5,036   | 5,363  | 4,257  |        |
| 9  | 24,873 | 24,008 | 22,337 |        | 146,498 | 152,973 | 131,325 |        | 993     | 927    | 918    |        | 6,029   | 6,290  | 5,175  |        |
| 10 | 25,949 | 24,495 | 23,013 |        | 172,447 | 177,468 | 154,338 |        | 1,086   | 1,050  | 941    |        | 7,115   | 7,340  | 6,116  |        |
| 11 | 25,527 | 23,655 | 24,010 |        | 197,974 | 201,123 | 178,348 |        | 961     | 888    | 858    |        | 8,076   | 8,228  | 6,974  |        |
| 12 | 24,415 | 22,294 | 22,819 |        | 222,389 | 223,417 | 201,167 |        | 998     | 934    | 928    |        | 9,074   | 9,162  | 7,902  |        |
| 1  | 20,925 | 18,037 | 19,200 |        | 243,314 | 241,454 | 220,367 |        | 1,041   | 952    | 920    |        | 10,115  | 10,114 | 8,822  |        |
| 2  | 21,992 | 19,557 | 20,390 |        | 265,306 | 261,011 | 240,757 |        | 911     | 739    | 832    |        | 11,026  | 10,853 | 9,654  |        |
| 3  | 22,404 | 22,327 | 22,340 |        | 287,710 | 283,338 | 263,097 |        | 899     | 951    | 873    |        | 11,925  | 11,804 | 10,527 |        |

持家



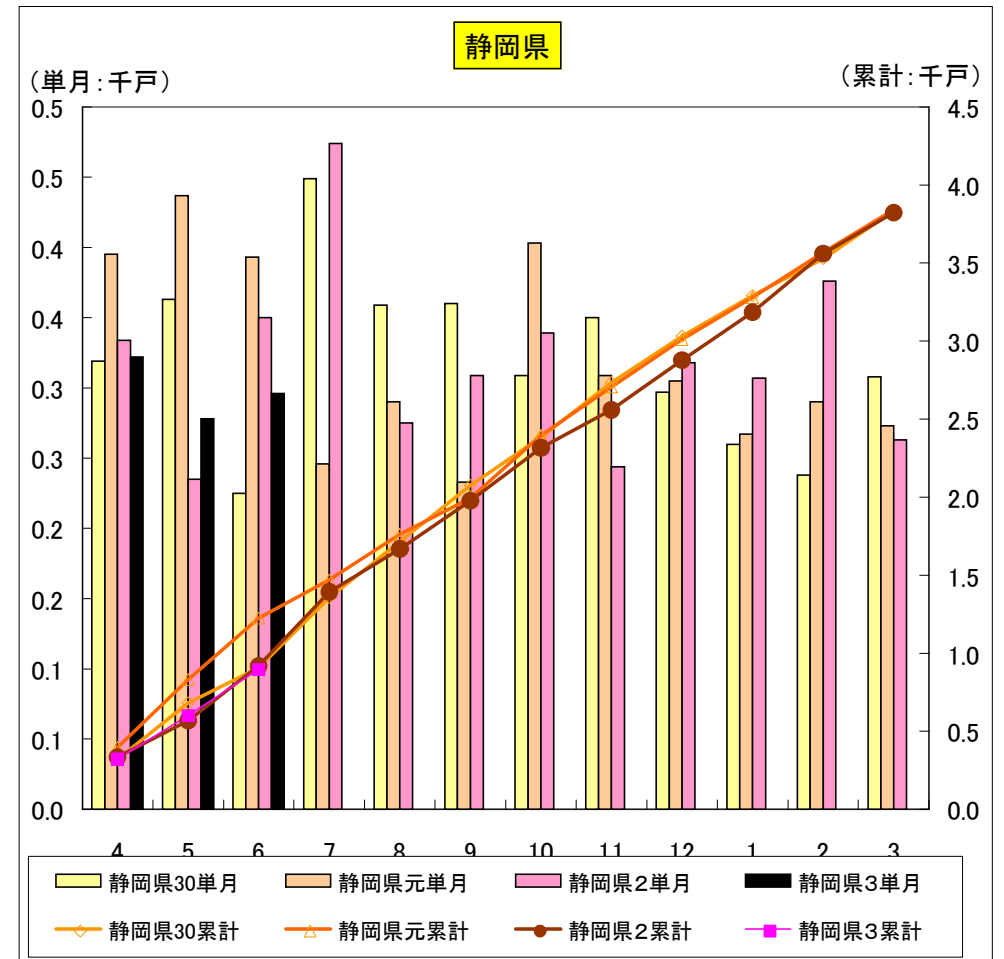
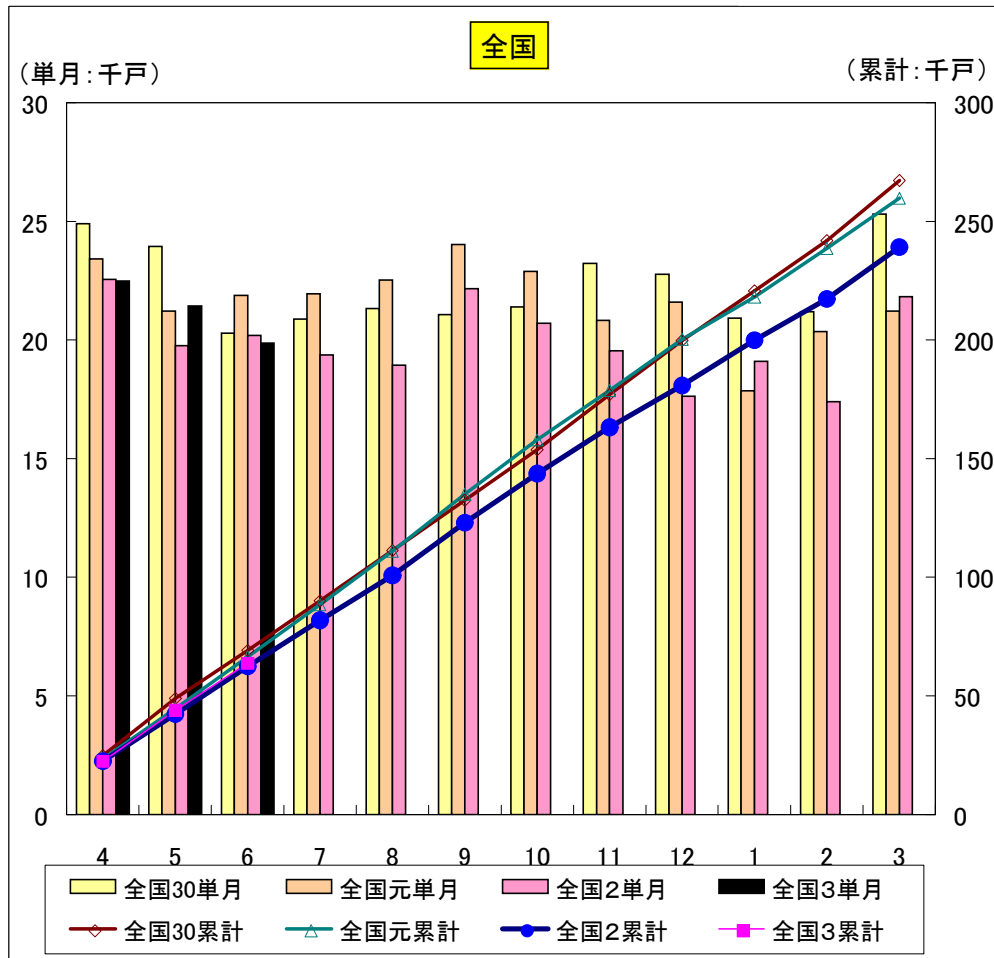
| 貸家 | 全国30単月 | 全国元単月  | 全国2単月  | 全国3単月  | 全国30累計  | 全国元累計   | 全国2累計   | 全国3累計  | 静岡県30単月 | 静岡県元単月 | 静岡県2単月 | 静岡県3単月 | 静岡県30累計 | 静岡県元累計 | 静岡県2累計 | 静岡県3累計 |
|----|--------|--------|--------|--------|---------|---------|---------|--------|---------|--------|--------|--------|---------|--------|--------|--------|
| 4  | 35,447 | 29,511 | 25,379 | 28,825 | 35,447  | 29,511  | 25,379  | 28,825 | 682     | 443    | 510    | 617    | 682     | 443    | 510    | 617    |
| 5  | 31,083 | 26,164 | 24,041 | 25,074 | 66,530  | 55,675  | 49,420  | 53,899 | 711     | 522    | 617    | 638    | 1,393   | 965    | 1,127  | 1,255  |
| 6  | 34,884 | 30,645 | 26,666 | 29,802 | 101,414 | 86,320  | 76,086  | 83,707 | 408     | 802    | 488    | 512    | 1,807   | 1,767  | 1,615  | 1,767  |
| 7  | 35,847 | 30,383 | 27,696 |        | 137,261 | 116,703 | 103,782 |        | 769     | 515    | 508    |        | 2,570   | 2,282  | 2,123  |        |
| 8  | 35,457 | 29,255 | 27,671 |        | 172,718 | 145,958 | 131,453 |        | 702     | 702    | 537    |        | 3,272   | 2,984  | 2,660  |        |
| 9  | 35,350 | 29,414 | 25,053 |        | 208,068 | 175,372 | 156,506 |        | 546     | 371    | 538    |        | 3,818   | 3,355  | 3,198  |        |
| 10 | 35,225 | 29,417 | 26,043 |        | 243,293 | 204,789 | 182,549 |        | 657     | 491    | 374    |        | 4,475   | 3,846  | 3,572  |        |
| 11 | 34,902 | 28,779 | 26,451 |        | 278,195 | 233,568 | 209,000 |        | 634     | 337    | 417    |        | 5,109   | 4,183  | 3,989  |        |
| 12 | 30,788 | 27,611 | 24,423 |        | 308,983 | 261,179 | 233,423 |        | 520     | 624    | 524    |        | 5,629   | 4,807  | 4,513  |        |
| 1  | 24,776 | 24,147 | 19,794 |        | 333,759 | 285,326 | 253,217 |        | 591     | 529    | 431    |        | 6,220   | 5,336  | 4,944  |        |
| 2  | 27,921 | 22,638 | 22,556 |        | 361,680 | 307,964 | 275,773 |        | 448     | 352    | 413    |        | 6,668   | 5,688  | 5,357  |        |
| 3  | 28,413 | 26,545 | 27,245 |        | 390,093 | 334,509 | 303,018 |        | 424     | 396    | 508    |        | 7,092   | 6,084  | 5,865  |        |

貸家



| 分譲 | 全国30単月 | 全国元単月  | 全国2単月  | 全国3単月  | 全国30累計  | 全国元累計   | 全国2累計   | 全国3累計  | 静岡県30単月 | 静岡県元単月 | 静岡県2単月 | 静岡県3単月 | 静岡県30累計 | 静岡県元累計 | 静岡県2累計 | 静岡県3累計 |
|----|--------|--------|--------|--------|---------|---------|---------|--------|---------|--------|--------|--------|---------|--------|--------|--------|
| 4  | 24,904 | 23,411 | 22,557 | 22,483 | 24,904  | 23,411  | 22,557  | 22,483 | 319     | 395    | 334    | 322    | 319     | 395    | 334    | 322    |
| 5  | 23,944 | 21,217 | 19,757 | 21,426 | 48,848  | 44,628  | 42,314  | 43,909 | 363     | 437    | 235    | 278    | 682     | 832    | 569    | 600    |
| 6  | 20,281 | 21,870 | 20,189 | 19,877 | 69,129  | 66,498  | 62,503  | 63,786 | 225     | 393    | 350    | 296    | 907     | 1,225  | 919    | 896    |
| 7  | 20,885 | 21,942 | 19,359 |        | 90,014  | 88,440  | 81,862  |        | 449     | 246    | 474    |        | 1,356   | 1,471  | 1,393  |        |
| 8  | 21,325 | 22,517 | 18,933 |        | 111,339 | 110,957 | 100,795 |        | 359     | 290    | 275    |        | 1,715   | 1,761  | 1,668  |        |
| 9  | 21,064 | 24,029 | 22,159 |        | 132,403 | 134,986 | 122,954 |        | 360     | 233    | 309    |        | 2,075   | 1,994  | 1,977  |        |
| 10 | 21,394 | 22,896 | 20,706 |        | 153,797 | 157,882 | 143,660 |        | 309     | 403    | 339    |        | 2,384   | 2,397  | 2,316  |        |
| 11 | 23,220 | 20,819 | 19,548 |        | 177,017 | 178,701 | 163,208 |        | 350     | 309    | 244    |        | 2,734   | 2,706  | 2,560  |        |
| 12 | 22,756 | 21,593 | 17,622 |        | 199,773 | 200,294 | 180,830 |        | 297     | 305    | 318    |        | 3,031   | 3,011  | 2,878  |        |
| 1  | 20,911 | 17,856 | 19,089 |        | 220,684 | 218,150 | 199,919 |        | 260     | 267    | 307    |        | 3,291   | 3,278  | 3,185  |        |
| 2  | 21,190 | 20,362 | 17,398 |        | 241,874 | 238,512 | 217,317 |        | 238     | 290    | 376    |        | 3,529   | 3,568  | 3,561  |        |
| 3  | 25,301 | 21,220 | 21,824 |        | 267,175 | 259,732 | 239,141 |        | 308     | 273    | 263    |        | 3,837   | 3,841  | 3,824  |        |

分譲



| 分譲マンション | 全国30単月 | 全国元単月  | 全国2単月  | 全国3単月  | 全国30累計  | 全国元累計   | 全国2累計   | 全国3累計  | 静岡県30単月 | 静岡県元単月 | 静岡県2単月 | 静岡県3単月 | 静岡県30累計 | 静岡県元累計 | 静岡県2累計 | 静岡県3累計 |
|---------|--------|--------|--------|--------|---------|---------|---------|--------|---------|--------|--------|--------|---------|--------|--------|--------|
| 4       | 12,350 | 10,480 | 10,723 | 10,776 | 12,350  | 10,480  | 10,723  | 10,776 | 30      | 67     | 82     | 0      | 30      | 67     | 82     | 0      |
| 5       | 11,861 | 9,165  | 9,292  | 9,444  | 24,211  | 19,645  | 20,015  | 20,220 | 98      | 145    | 0      | 0      | 128     | 212    | 82     | 0      |
| 6       | 8,253  | 8,597  | 8,422  | 7,024  | 32,464  | 28,242  | 28,437  | 27,244 | 0       | 101    | 87     | 0      | 128     | 313    | 169    | 0      |
| 7       | 8,699  | 8,600  | 8,352  |        | 41,163  | 36,842  | 36,789  |        | 160     | 0      | 253    |        | 288     | 313    | 422    |        |
| 8       | 9,146  | 10,159 | 9,377  |        | 50,309  | 47,001  | 46,166  |        | 60      | 30     | 121    |        | 348     | 343    | 543    |        |
| 9       | 8,934  | 12,022 | 11,970 |        | 59,243  | 59,023  | 58,136  |        | 83      | 0      | 119    |        | 431     | 343    | 662    |        |
| 10      | 8,604  | 9,998  | 9,908  |        | 67,847  | 69,021  | 68,044  |        | 0       | 72     | 88     |        | 431     | 415    | 750    |        |
| 11      | 10,460 | 7,995  | 8,049  |        | 78,307  | 77,016  | 76,093  |        | 74      | 0      | 0      |        | 505     | 415    | 750    |        |
| 12      | 9,546  | 8,957  | 6,149  |        | 87,853  | 85,973  | 82,242  |        | 0       | 27     | 0      |        | 505     | 442    | 750    |        |
| 1       | 9,368  | 6,789  | 8,775  |        | 97,221  | 92,762  | 91,017  |        | 0       | 0      | 83     |        | 505     | 442    | 833    |        |
| 2       | 9,132  | 9,353  | 6,779  |        | 106,353 | 102,115 | 97,796  |        | 0       | 51     | 135    |        | 505     | 493    | 968    |        |
| 3       | 13,330 | 9,500  | 10,392 |        | 119,683 | 111,615 | 108,188 |        | 58      | 0      | 0      |        | 563     | 493    | 968    |        |

分譲マンション

