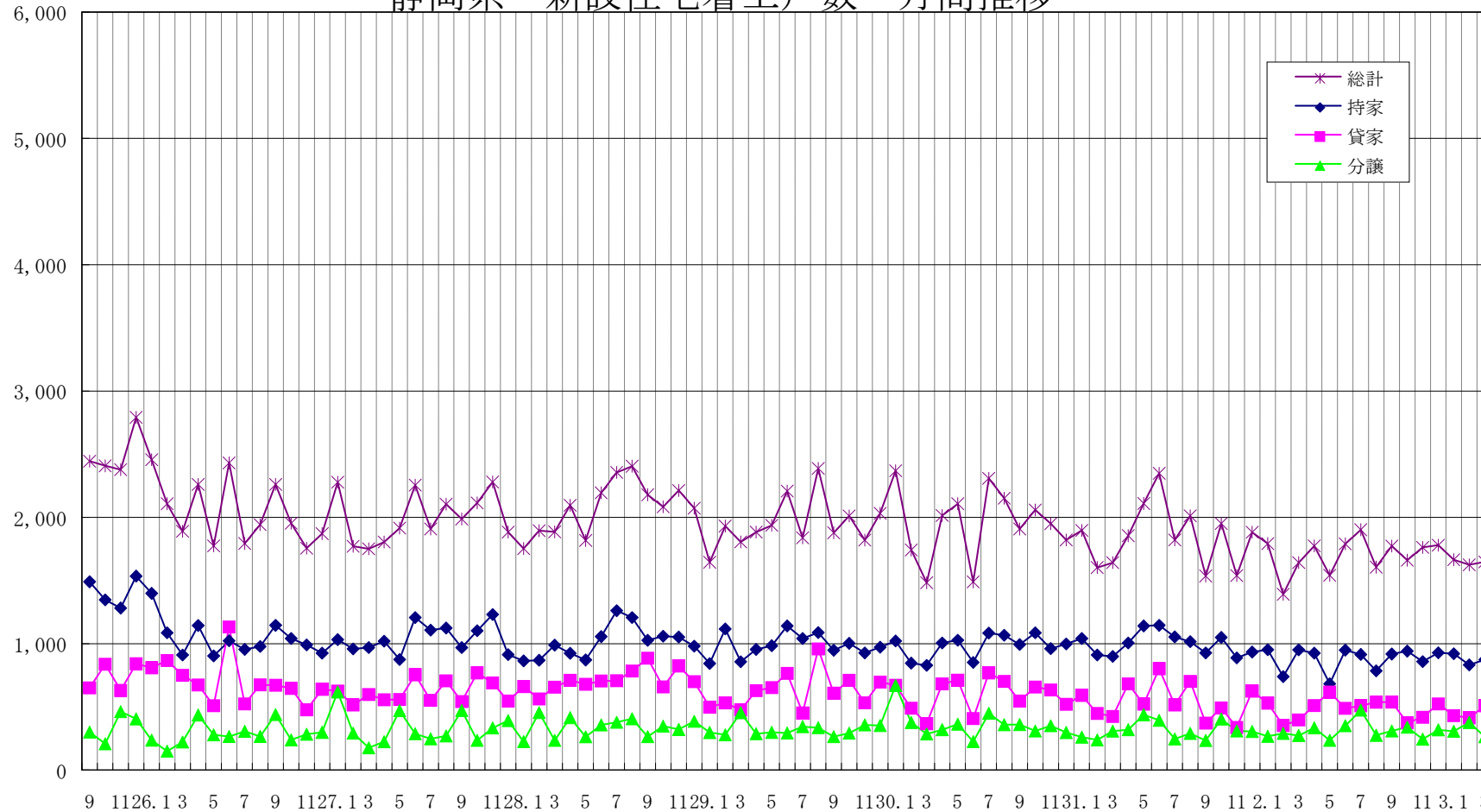


戸

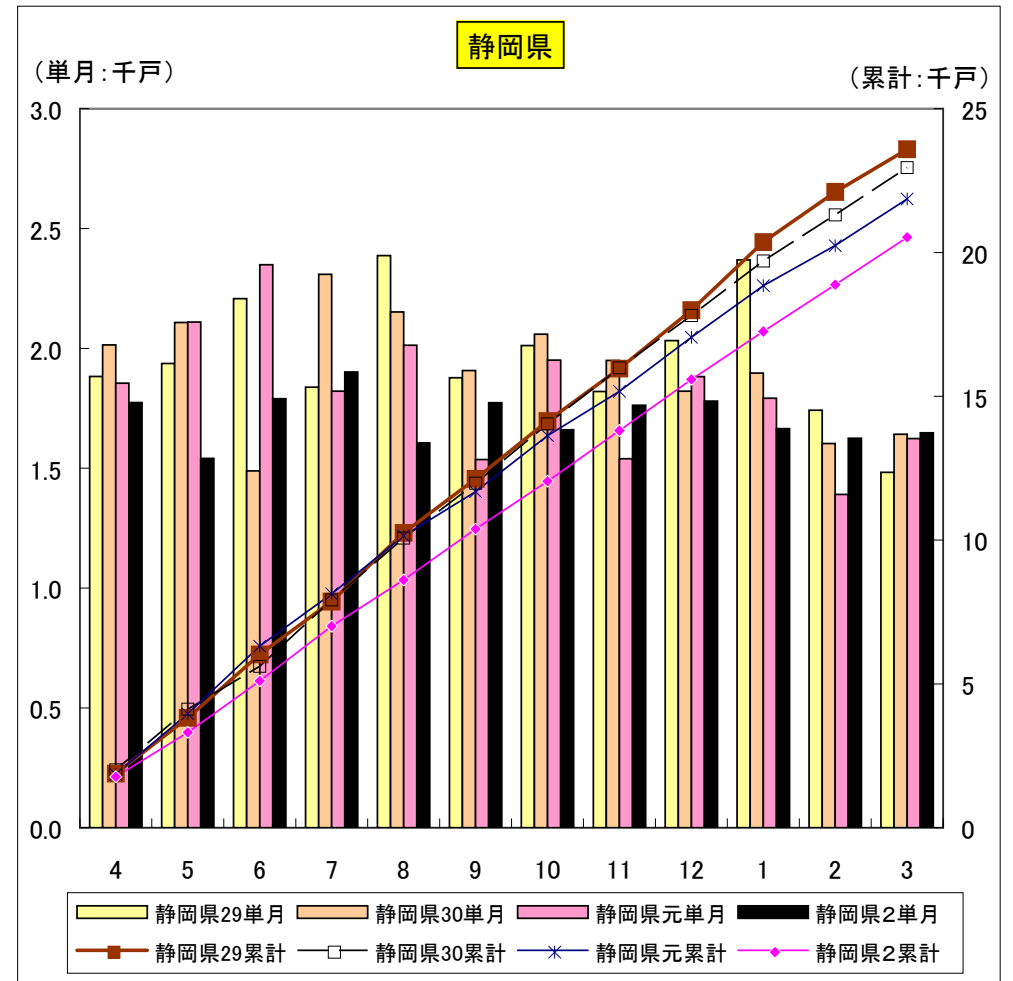
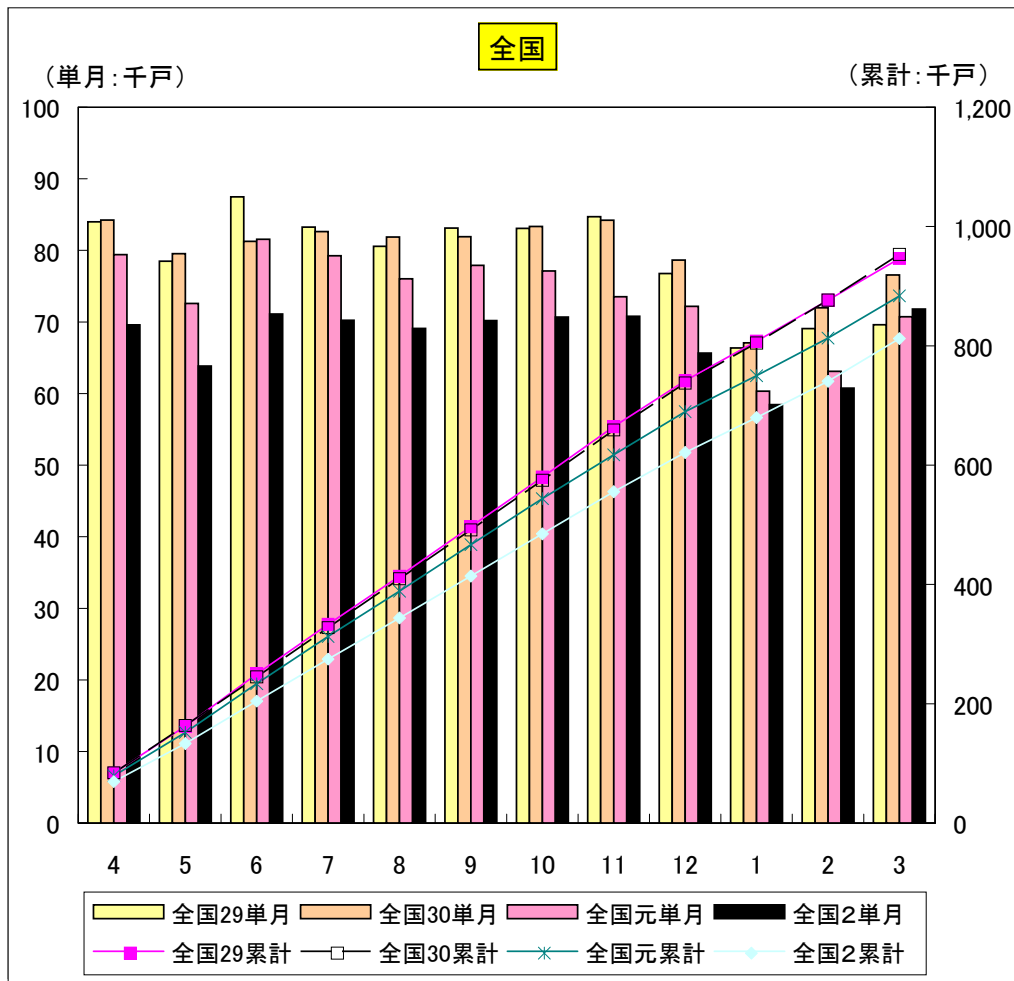
# 静岡県 新設住宅着工戸数 月間推移



年月

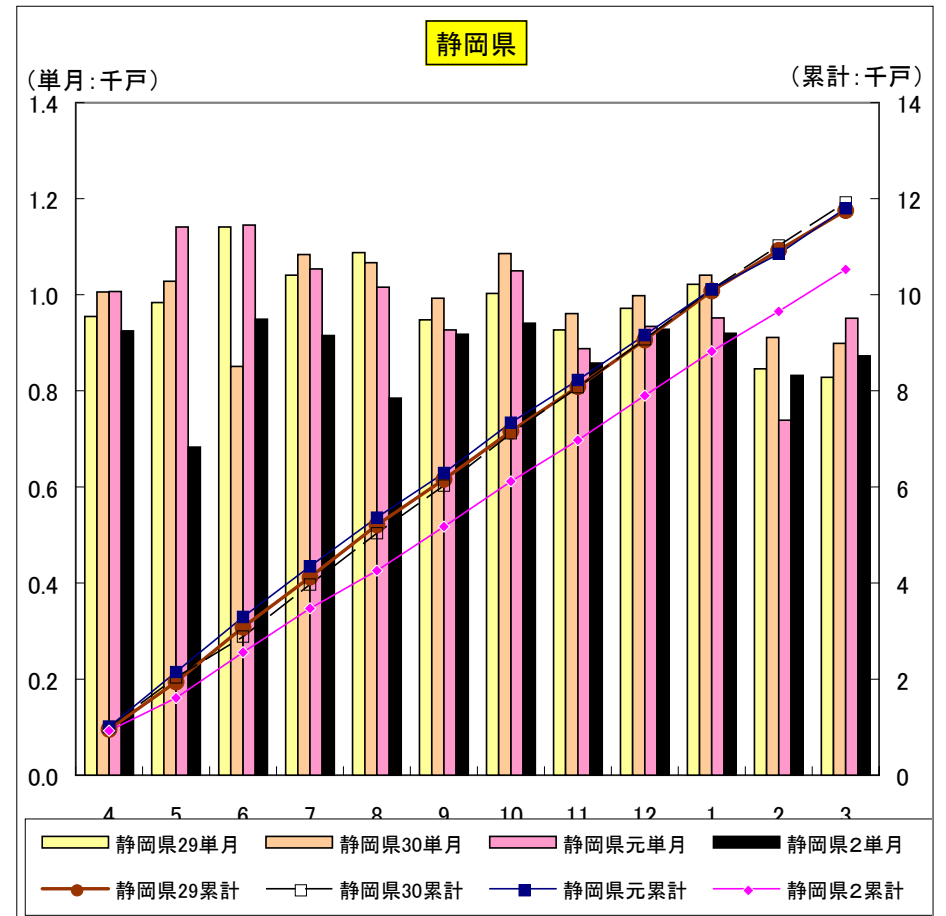
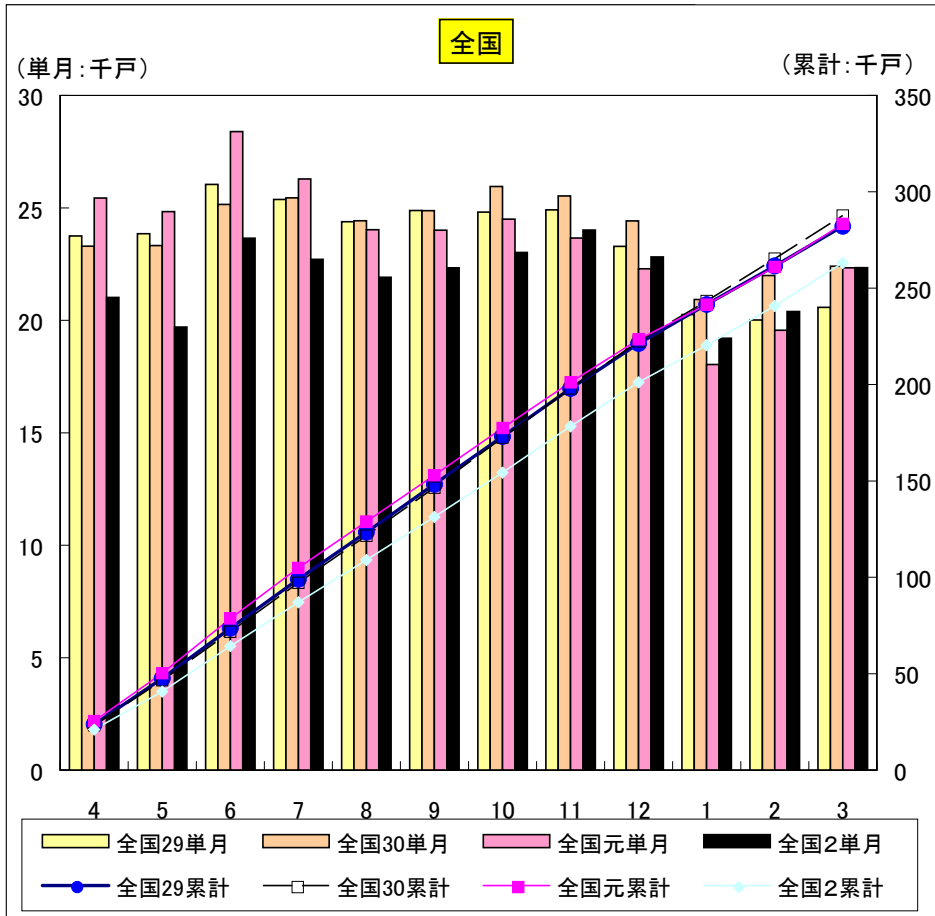
| 総計 | 全国29単月 | 全国30単月 | 全国元単月  | 全国2単月  | 全国29累計  | 全国30累計  | 全国元累計   | 全国2累計   | 静岡県29単月 | 静岡県30単月 | 静岡県元単月 | 静岡県2単月 | 静岡県29累計 | 静岡県30累計 | 静岡県元累計 | 静岡県2累計 |
|----|--------|--------|--------|--------|---------|---------|---------|---------|---------|---------|--------|--------|---------|---------|--------|--------|
| 4  | 83,979 | 84,226 | 79,389 | 69,568 | 83,979  | 84,226  | 79,389  | 69,568  | 1,883   | 2,015   | 1,855  | 1,774  | 1,883   | 2,015   | 1,855  | 1,774  |
| 5  | 78,481 | 79,539 | 72,581 | 63,839 | 162,460 | 163,765 | 151,970 | 133,407 | 1,937   | 2,108   | 2,110  | 1,541  | 3,820   | 4,123   | 3,965  | 3,315  |
| 6  | 87,456 | 81,275 | 81,541 | 71,101 | 249,916 | 245,040 | 233,511 | 204,508 | 2,208   | 1,489   | 2,349  | 1,790  | 6,028   | 5,612   | 6,314  | 5,105  |
| 7  | 83,234 | 82,615 | 79,232 | 70,244 | 333,150 | 327,655 | 312,743 | 274,752 | 1,838   | 2,309   | 1,821  | 1,902  | 7,866   | 7,921   | 8,135  | 7,007  |
| 8  | 80,562 | 81,860 | 76,034 | 69,101 | 413,712 | 409,515 | 388,777 | 343,853 | 2,387   | 2,152   | 2,013  | 1,606  | 10,253  | 10,073  | 10,148 | 8,613  |
| 9  | 83,128 | 81,903 | 77,915 | 70,186 | 496,840 | 491,418 | 466,692 | 414,039 | 1,878   | 1,908   | 1,536  | 1,773  | 12,131  | 11,981  | 11,684 | 10,386 |
| 10 | 83,057 | 83,330 | 77,123 | 70,685 | 579,897 | 574,748 | 543,815 | 484,724 | 2,012   | 2,059   | 1,951  | 1,661  | 14,143  | 14,040  | 13,635 | 12,047 |
| 11 | 84,703 | 84,213 | 73,523 | 70,798 | 664,600 | 658,961 | 617,338 | 555,522 | 1,820   | 1,950   | 1,539  | 1,763  | 15,963  | 15,990  | 15,174 | 13,810 |
| 12 | 76,751 | 78,634 | 72,174 | 65,643 | 741,351 | 737,595 | 689,512 | 621,165 | 2,032   | 1,821   | 1,882  | 1,780  | 17,995  | 17,811  | 17,056 | 15,590 |
| 1  | 66,358 | 67,087 | 60,341 | 58,448 | 807,709 | 804,682 | 749,853 | 679,613 | 2,369   | 1,897   | 1,792  | 1,665  | 20,364  | 19,708  | 18,848 | 17,255 |
| 2  | 69,071 | 71,966 | 63,105 | 60,764 | 876,780 | 876,648 | 812,958 | 740,377 | 1,742   | 1,603   | 1,391  | 1,625  | 22,106  | 21,311  | 20,239 | 18,880 |
| 3  | 69,616 | 76,558 | 70,729 | 71,787 | 946,396 | 953,206 | 883,687 | 812,164 | 1,483   | 1,642   | 1,624  | 1,648  | 23,589  | 22,953  | 21,863 | 20,528 |

全体



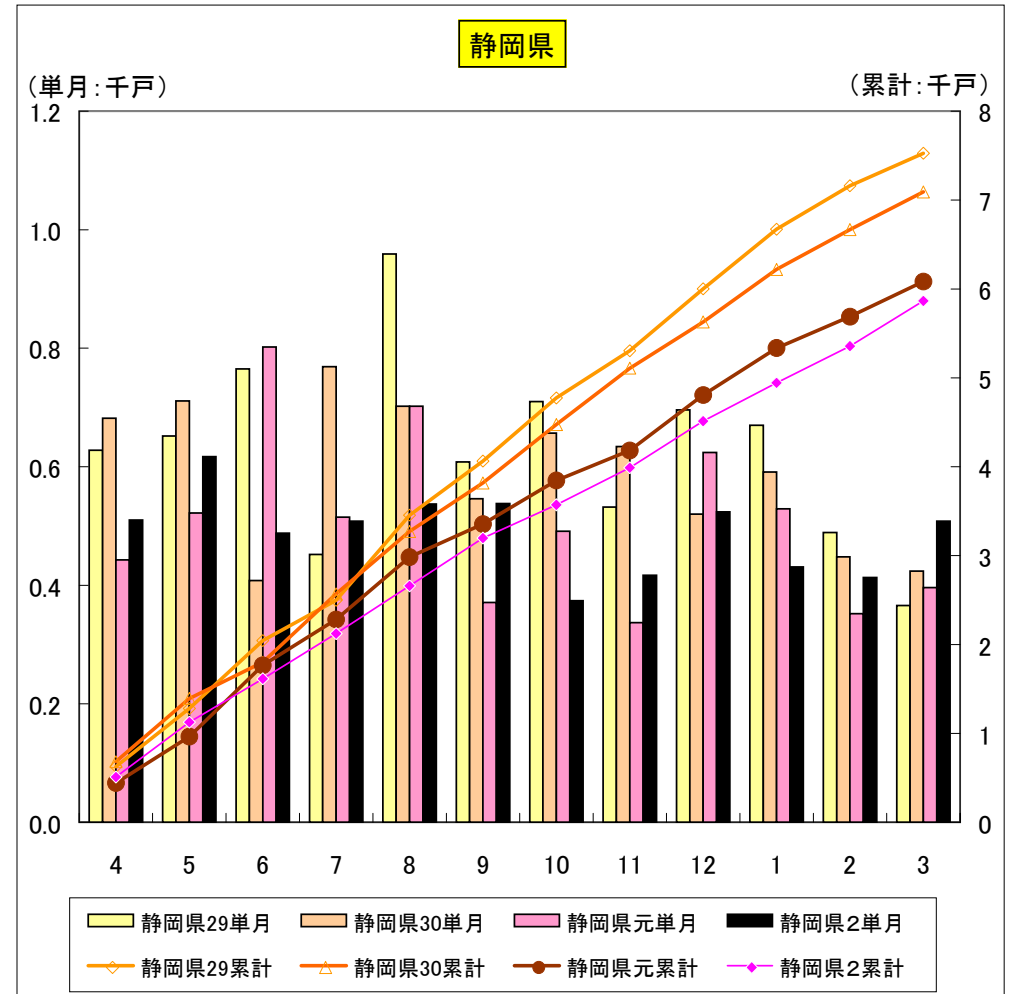
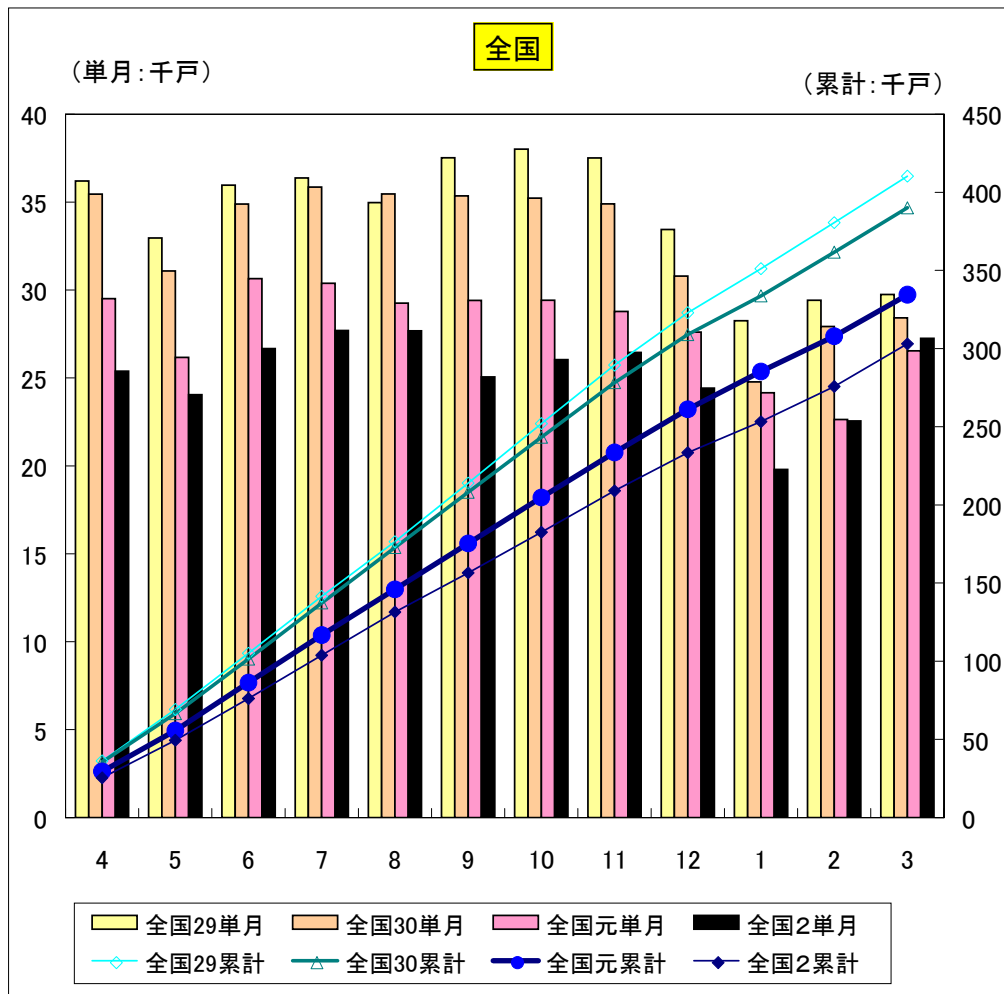
| 持家 | 全国29单月 | 全国30单月 | 全国元单月  | 全国2单月  | 全国29累計  | 全国30累計  | 全国元累計   | 全国2累計   | 静岡県29单月 | 静岡県30单月 | 静岡県元单月 | 静岡県2单月 | 静岡県29累計 | 静岡県30累計 | 静岡県元累計 | 静岡県2累計 |
|----|--------|--------|--------|--------|---------|---------|---------|---------|---------|---------|--------|--------|---------|---------|--------|--------|
| 4  | 23,751 | 23,289 | 25,436 | 21,018 | 23,751  | 23,289  | 25,436  | 21,018  | 955     | 1,006   | 1,007  | 925    | 955     | 1,006   | 1,007  | 925    |
| 5  | 23,846 | 23,321 | 24,826 | 19,697 | 47,597  | 46,610  | 50,262  | 40,715  | 984     | 1,028   | 1,141  | 683    | 1,939   | 2,034   | 2,148  | 1,608  |
| 6  | 26,037 | 25,148 | 28,394 | 23,650 | 73,634  | 71,758  | 78,656  | 64,365  | 1,141   | 851     | 1,145  | 949    | 3,080   | 2,885   | 3,293  | 2,557  |
| 7  | 25,370 | 25,447 | 26,282 | 22,708 | 99,004  | 97,205  | 104,938 | 87,073  | 1,041   | 1,084   | 1,054  | 915    | 4,121   | 3,969   | 4,347  | 3,472  |
| 8  | 24,379 | 24,420 | 24,027 | 21,915 | 123,383 | 121,625 | 128,965 | 108,988 | 1,088   | 1,067   | 1,016  | 785    | 5,209   | 5,036   | 5,363  | 4,257  |
| 9  | 24,883 | 24,873 | 24,008 | 22,337 | 148,266 | 146,498 | 152,973 | 131,325 | 948     | 993     | 927    | 918    | 6,157   | 6,029   | 6,290  | 5,175  |
| 10 | 24,807 | 25,949 | 24,495 | 23,013 | 173,073 | 172,447 | 177,468 | 154,338 | 1,003   | 1,086   | 1,050  | 941    | 7,160   | 7,115   | 7,340  | 6,116  |
| 11 | 24,904 | 25,527 | 23,655 | 24,010 | 197,977 | 197,974 | 201,123 | 178,348 | 927     | 961     | 888    | 858    | 8,087   | 8,076   | 8,228  | 6,974  |
| 12 | 23,288 | 24,415 | 22,294 | 22,819 | 221,265 | 222,389 | 223,417 | 201,167 | 972     | 998     | 934    | 928    | 9,059   | 9,074   | 9,162  | 7,902  |
| 1  | 20,257 | 20,925 | 18,037 | 19,200 | 241,522 | 243,314 | 241,454 | 220,367 | 1,022   | 1,041   | 952    | 920    | 10,081  | 10,115  | 10,114 | 8,822  |
| 2  | 20,013 | 21,992 | 19,557 | 20,390 | 261,535 | 265,306 | 261,011 | 240,757 | 846     | 911     | 739    | 832    | 10,927  | 11,026  | 10,853 | 9,654  |
| 3  | 20,576 | 22,404 | 22,327 | 22,340 | 282,111 | 287,710 | 283,338 | 263,097 | 828     | 899     | 951    | 873    | 11,755  | 11,925  | 11,804 | 10,527 |

持家



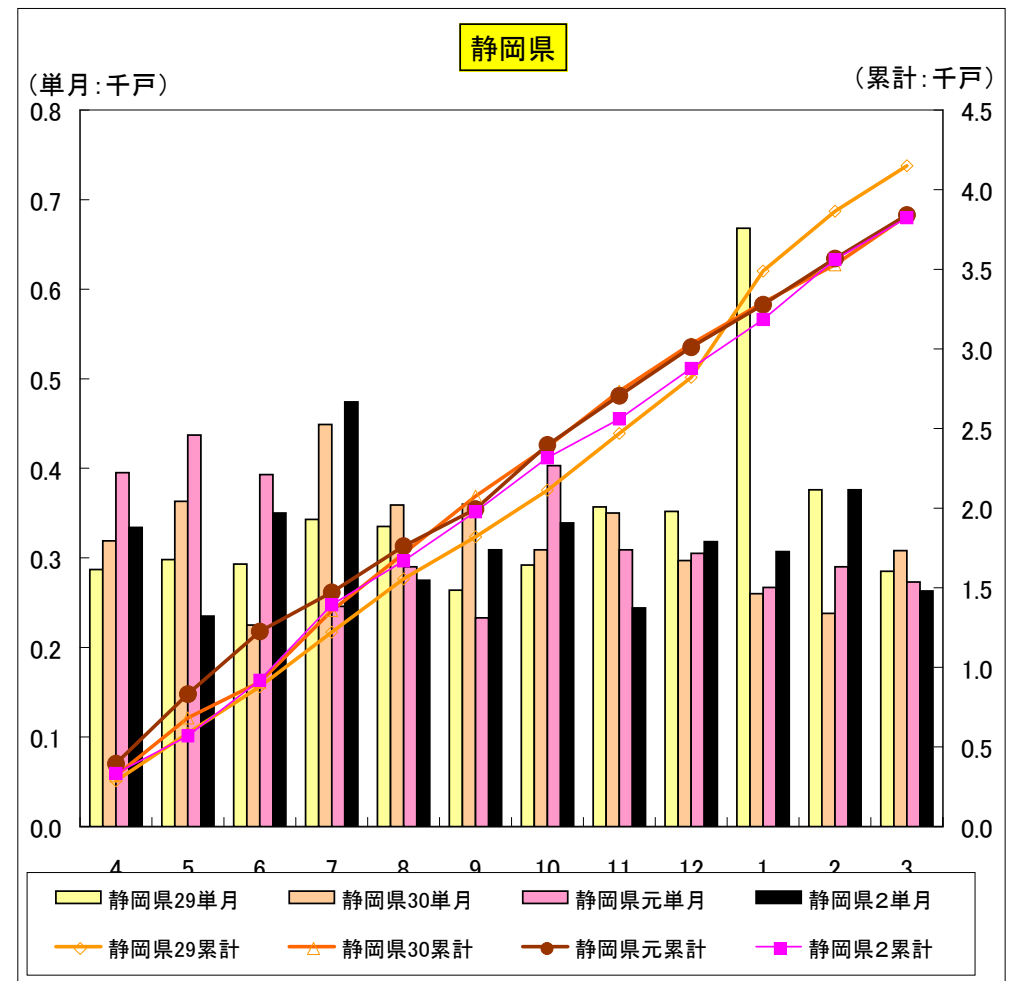
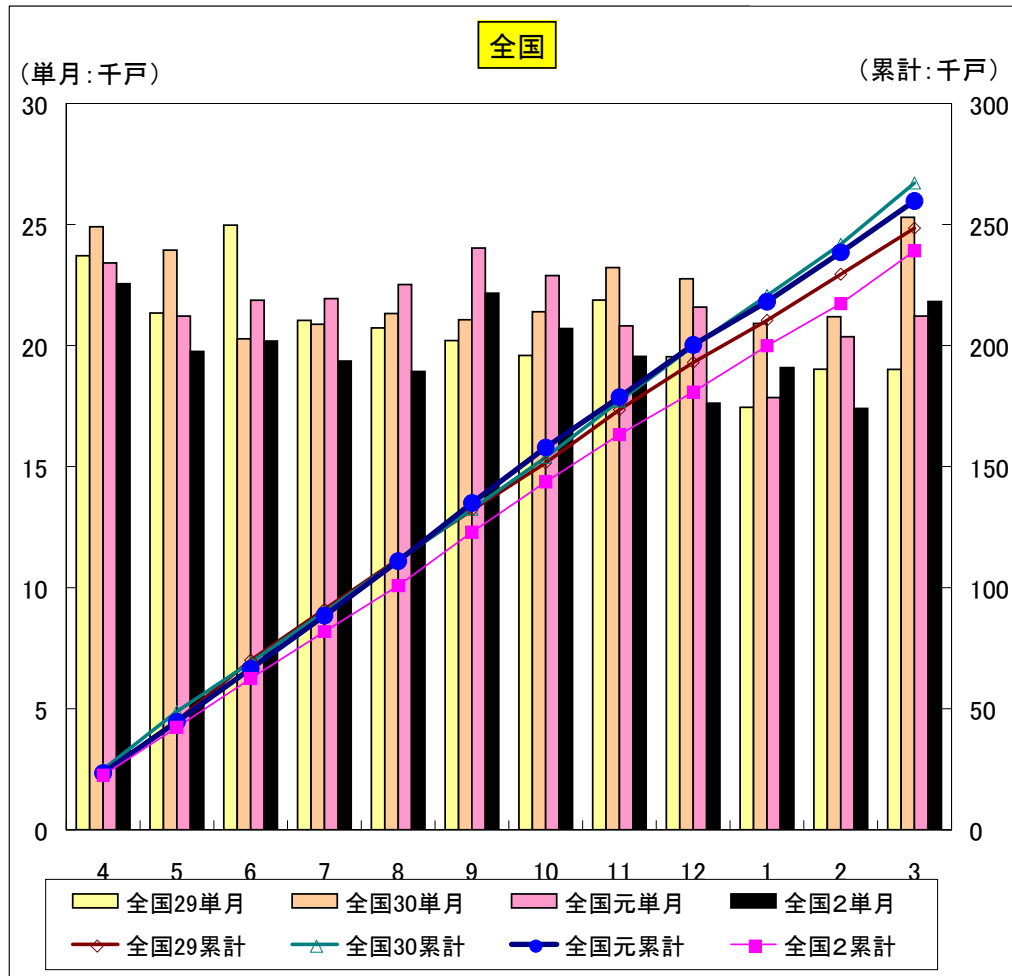
| 貸家 | 全国29単月 | 全国30単月 | 全国元単月  | 全国2単月  | 全国29累計  | 全国30累計  | 全国元累計   | 全国2累計   | 静岡県29単月 | 静岡県30単月 | 静岡県元単月 | 静岡県2単月 | 静岡県29累計 | 静岡県30累計 | 静岡県元累計 | 静岡県2累計 |
|----|--------|--------|--------|--------|---------|---------|---------|---------|---------|---------|--------|--------|---------|---------|--------|--------|
| 4  | 36,194 | 35,447 | 29,511 | 25,379 | 36,194  | 35,447  | 29,511  | 25,379  | 628     | 682     | 443    | 510    | 628     | 682     | 443    | 510    |
| 5  | 32,956 | 31,083 | 26,164 | 24,041 | 69,150  | 66,530  | 55,675  | 49,420  | 652     | 711     | 522    | 617    | 1,280   | 1,393   | 965    | 1,127  |
| 6  | 35,967 | 34,884 | 30,645 | 26,666 | 105,117 | 101,414 | 86,320  | 76,086  | 765     | 408     | 802    | 488    | 2,045   | 1,801   | 1,767  | 1,615  |
| 7  | 36,365 | 35,847 | 30,383 | 27,696 | 141,482 | 137,261 | 116,703 | 103,782 | 452     | 769     | 515    | 508    | 2,497   | 2,570   | 2,282  | 2,123  |
| 8  | 34,968 | 35,457 | 29,255 | 27,671 | 176,450 | 172,718 | 145,958 | 131,453 | 959     | 702     | 702    | 537    | 3,456   | 3,272   | 2,984  | 2,660  |
| 9  | 37,521 | 35,350 | 29,414 | 25,053 | 213,971 | 208,068 | 175,372 | 156,506 | 608     | 546     | 371    | 538    | 4,064   | 3,818   | 3,355  | 3,198  |
| 10 | 38,017 | 35,225 | 29,417 | 26,043 | 251,988 | 243,293 | 204,789 | 182,549 | 710     | 657     | 491    | 374    | 4,774   | 4,475   | 3,846  | 3,572  |
| 11 | 37,508 | 34,902 | 28,779 | 26,451 | 289,496 | 278,195 | 233,568 | 209,000 | 532     | 634     | 337    | 417    | 5,306   | 5,109   | 4,183  | 3,989  |
| 12 | 33,438 | 30,788 | 27,611 | 24,423 | 322,934 | 308,983 | 261,179 | 233,423 | 696     | 520     | 624    | 524    | 6,002   | 5,629   | 4,807  | 4,513  |
| 1  | 28,251 | 24,776 | 24,147 | 19,794 | 351,185 | 333,759 | 285,326 | 253,217 | 670     | 591     | 529    | 431    | 6,672   | 6,220   | 5,336  | 4,944  |
| 2  | 29,420 | 27,921 | 22,638 | 22,556 | 380,605 | 361,680 | 307,964 | 275,773 | 489     | 448     | 352    | 413    | 7,161   | 6,668   | 5,688  | 5,357  |
| 3  | 29,750 | 28,413 | 26,545 | 27,245 | 410,355 | 390,093 | 334,509 | 303,018 | 366     | 424     | 396    | 508    | 7,527   | 7,092   | 6,084  | 5,865  |

貸家



| 分譲 | 全国29単月 | 全国30単月 | 全国元単月  | 全国2単月  | 全国29累計  | 全国30累計  | 全国元累計   | 全国2累計   | 静岡県29単月 | 静岡県30単月 | 静岡県元単月 | 静岡県2単月 | 静岡県29累計 | 静岡県30累計 | 静岡県元累計 | 静岡県2累計 |
|----|--------|--------|--------|--------|---------|---------|---------|---------|---------|---------|--------|--------|---------|---------|--------|--------|
| 4  | 23,708 | 24,904 | 23,411 | 22,557 | 23,708  | 24,904  | 23,411  | 22,557  | 287     | 319     | 395    | 334    | 287     | 319     | 395    | 334    |
| 5  | 21,347 | 23,944 | 21,217 | 19,757 | 45,055  | 48,848  | 44,628  | 42,314  | 298     | 363     | 437    | 235    | 585     | 682     | 832    | 569    |
| 6  | 24,976 | 20,281 | 21,870 | 20,189 | 70,031  | 69,129  | 66,498  | 62,503  | 293     | 225     | 393    | 350    | 878     | 907     | 1,225  | 919    |
| 7  | 21,037 | 20,885 | 21,942 | 19,359 | 91,068  | 90,014  | 88,440  | 81,862  | 343     | 449     | 246    | 474    | 1,221   | 1,356   | 1,471  | 1,393  |
| 8  | 20,728 | 21,325 | 22,517 | 18,933 | 111,796 | 111,339 | 110,957 | 100,795 | 335     | 359     | 290    | 275    | 1,556   | 1,715   | 1,761  | 1,668  |
| 9  | 20,202 | 21,064 | 24,029 | 22,159 | 131,998 | 132,403 | 134,986 | 122,954 | 264     | 360     | 233    | 309    | 1,820   | 2,075   | 1,994  | 1,977  |
| 10 | 19,588 | 21,394 | 22,896 | 20,706 | 151,586 | 153,797 | 157,882 | 143,660 | 292     | 309     | 403    | 339    | 2,112   | 2,384   | 2,397  | 2,316  |
| 11 | 21,882 | 23,220 | 20,819 | 19,548 | 173,468 | 177,017 | 178,701 | 163,208 | 357     | 350     | 309    | 244    | 2,469   | 2,734   | 2,706  | 2,560  |
| 12 | 19,537 | 22,756 | 21,593 | 17,622 | 193,005 | 199,773 | 200,294 | 180,830 | 352     | 297     | 305    | 318    | 2,821   | 3,031   | 3,011  | 2,878  |
| 1  | 17,448 | 20,911 | 17,856 | 19,089 | 210,453 | 220,684 | 218,150 | 199,919 | 668     | 260     | 267    | 307    | 3,489   | 3,291   | 3,278  | 3,185  |
| 2  | 19,023 | 21,190 | 20,362 | 17,398 | 229,476 | 241,874 | 238,512 | 217,317 | 376     | 238     | 290    | 376    | 3,865   | 3,529   | 3,568  | 3,561  |
| 3  | 19,019 | 25,301 | 21,220 | 21,824 | 248,495 | 267,175 | 259,732 | 239,141 | 285     | 308     | 273    | 263    | 4,150   | 3,837   | 3,841  | 3,824  |

分譲



| 分譲マンション | 全国29単月 | 全国30単月 | 全国元単月  | 全国2単月  | 全国29累計  | 全国30累計  | 全国元累計   | 全国2累計   | 静岡県29単月 | 静岡県30単月 | 静岡県元単月 | 静岡県2単月 | 静岡県29累計 | 静岡県30累計 | 静岡県元累計 | 静岡県2累計 |
|---------|--------|--------|--------|--------|---------|---------|---------|---------|---------|---------|--------|--------|---------|---------|--------|--------|
| 4       | 12,097 | 12,350 | 10,480 | 10,723 | 12,097  | 12,350  | 10,480  | 10,723  | 48      | 30      | 67     | 82     | 48      | 30      | 67     | 82     |
| 5       | 9,823  | 11,861 | 9,165  | 9,292  | 21,920  | 24,211  | 19,645  | 20,015  | 35      | 98      | 145    | 0      | 83      | 128     | 212    | 82     |
| 6       | 12,942 | 8,253  | 8,597  | 8,422  | 34,862  | 32,464  | 28,242  | 28,437  | 24      | 0       | 101    | 87     | 107     | 128     | 313    | 169    |
| 7       | 9,059  | 8,699  | 8,600  | 8,352  | 43,921  | 41,163  | 36,842  | 36,789  | 51      | 160     | 0      | 253    | 158     | 288     | 313    | 422    |
| 8       | 9,109  | 9,146  | 10,159 | 9,377  | 53,030  | 50,309  | 47,001  | 46,166  | 62      | 60      | 30     | 121    | 220     | 348     | 343    | 543    |
| 9       | 8,628  | 8,934  | 12,022 | 11,970 | 61,658  | 59,243  | 59,023  | 58,136  | 39      | 83      | 0      | 119    | 259     | 431     | 343    | 662    |
| 10      | 7,489  | 8,604  | 9,998  | 9,908  | 69,147  | 67,847  | 69,021  | 68,044  | 0       | 0       | 72     | 88     | 259     | 431     | 415    | 750    |
| 11      | 9,052  | 10,460 | 7,995  | 8,049  | 78,199  | 78,307  | 77,016  | 76,093  | 98      | 74      | 0      | 0      | 357     | 505     | 415    | 750    |
| 12      | 7,422  | 9,546  | 8,957  | 6,149  | 85,621  | 87,853  | 85,973  | 82,242  | 65      | 0       | 27     | 0      | 422     | 505     | 442    | 750    |
| 1       | 6,525  | 9,368  | 6,789  | 8,775  | 92,146  | 97,221  | 92,762  | 91,017  | 322     | 0       | 0      | 83     | 744     | 505     | 442    | 833    |
| 2       | 8,267  | 9,132  | 9,353  | 6,779  | 100,413 | 106,353 | 102,115 | 97,796  | 122     | 0       | 51     | 135    | 866     | 505     | 493    | 968    |
| 3       | 7,865  | 13,330 | 9,500  | 10,392 | 108,278 | 119,683 | 111,615 | 108,188 | 82      | 58      | 0      | 0      | 948     | 563     | 493    | 968    |

分譲マンション

